



44 Lavender Close, Corby, NN18 8PD



**STUART
CHARLES**
ESTATE AGENTS

£260,000

Stuart Charles are delighted to offer FOR SALE with NO CHAIN this three bedroom detached family home located in the desirable Oakleyvale area of Corby. Although in need of some modernisation this home is situated a short walk to a range of amenities and an early viewing is recommended to avoid missing out on this home. The accommodation comprises to the ground floor of an entrance hall, lounge, dining room, kitchen, utility room and a guest W.C. To the first floor are three good sized bedrooms, a three piece family bathroom and a family bathroom. Outside to the front a driveway provides off road parking and leads to a laid lawn and garage. To the rear a patio area leads up to a laid lawn and is enclosed by timber fencing. Call now to view!!

- NO CHAIN
- DINING ROOM
- GUEST W.C
- FAMILY BATHROOM AND EN-SUITE TO MASTER
- WALKING DISTANCE TO SHOPS
- GOOD SIZED LOUNGE
- KITCHEN WITH UTILITY ROOM
- THREE GOOD ROOMS
- WALKING DISTANCE TO SCHOOLS
- CLOSE TO PLAY AREAS

Entrance Hall

Entered via a double glazed door, radiator, stairs rising to first floor landing, door to:

Lounge

Double glazed window to front elevation, radiator, tv point, telephone point, under stairs storage, archway to:

Dining Room

Double glazed window to rear elevation, radiator, door to:

Kitchen

Fitted to comprise a range of base and eye level units with a single sink and drainer, gas hob with extractor, electric oven, space for free standing fridge/freezer, space for dishwasher, double glazed window to rear elevation, archway to:

Utility Room

Wall mounted boiler, space for automatic washing machine, space for







condensing dryer, radiator, double glazed door to rear elevation, door to:

W.C

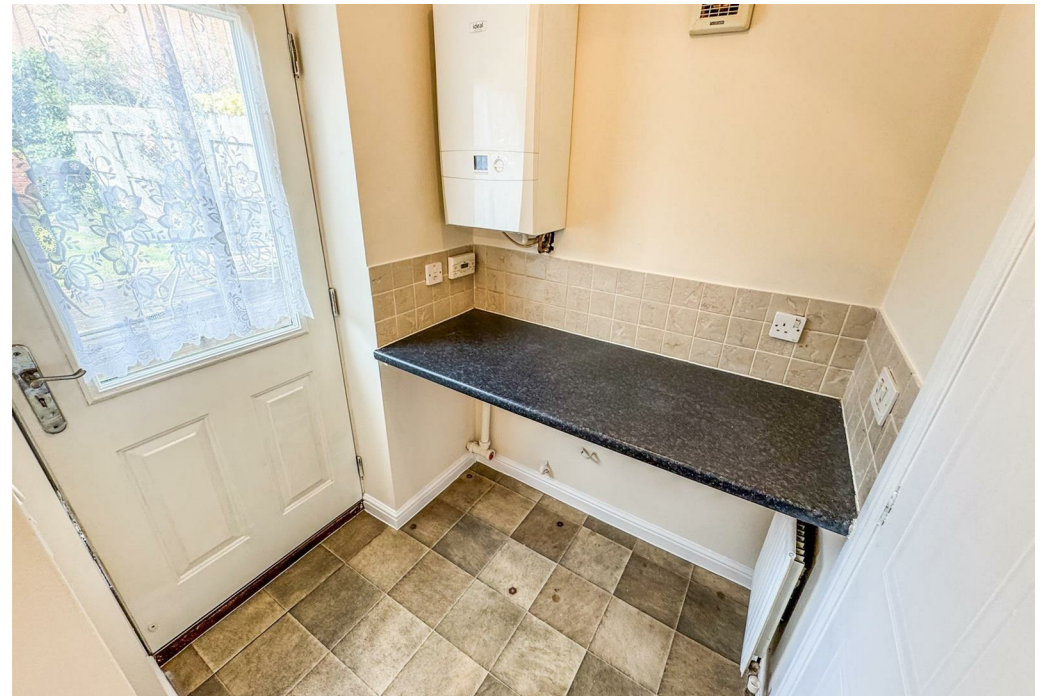
Fitted to comprise a two piece suite consisting of a low level pedestal, low level wash hand basin, radiator, double glazed window to side elevation.

First Floor Landing

Loft access, doors to:

Bedroom One

Double glazed window to rear elevation, radiator, tv point, door to:





En-Suite

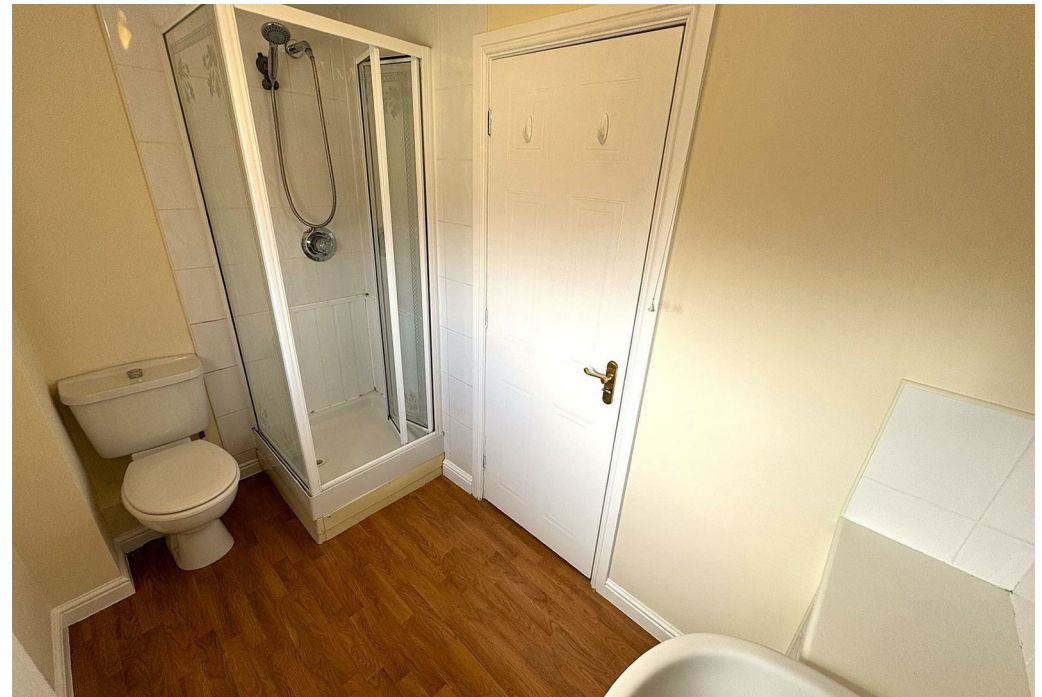
Fitted to comprise a three piece suite consisting of a shower, low level pedestal, low level wash hand basin, radiator, double glazed window to front elevation.

Bedroom Two

Double glazed window to front elevation, radiator, airing cupboard.

Bedroom Three

Double glazed window to rear elevation, radiator.





Bathroom

Fitted to comprise a three piece suite consisting of a panel bath, low level pedestal, low level wash hand basin, radiator, double glazed window to rear elevation.

Outside

Front: A driveway provides off road parking and leads to a laid lawn, garage and gated side access.

Rear: To the rear a patio area leads up onto a laid lawn and to a raised decking area while the garden is enclosed by timber fencing.





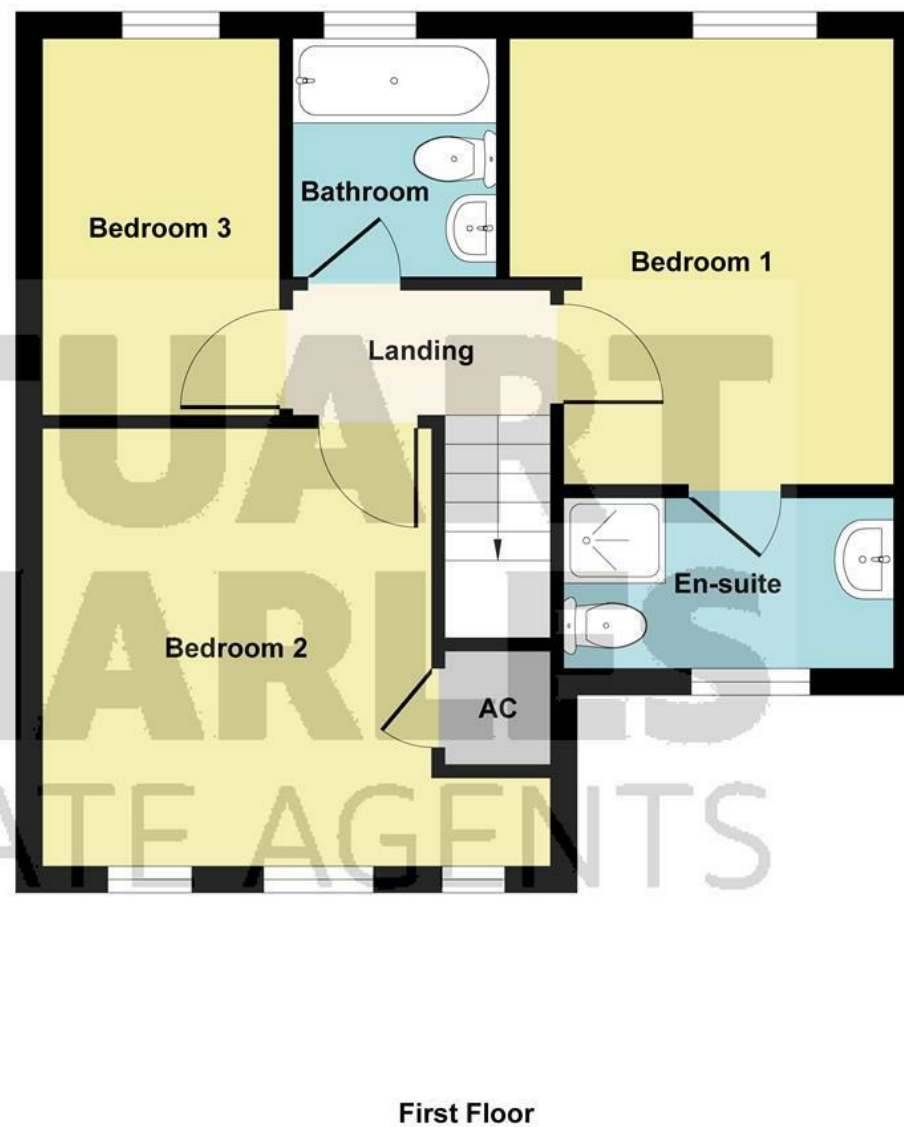


Illustration for identification purposes only, measurements are approximate, not to scale.

Produced by Elements Property

