



15 Catchpole Close, Corby, NN18 8DE





**£187,500**

Stuart Charles are delighted to offer FOR SALE with NO CHAIN this TWO DOUBLE bedroom semi detached home located in the Oakleyvale area of Corby. Situated a short walk away from Oakleyvale shops and several schools, an early viewing is recommended to avoid missing out on this home. The accommodation comprises to the ground floor of an entrance hall, lounge, kitchen/breakfast room and conservatory. To the first floor are two double bedrooms and a three piece family bathroom. Outside to the front is a laid lawn that leads to a tandem driveway. To the rear a patio area leads onto a laid lawn and is enclosed by timber fencing to all sides. Call now to view!!

- LOCATED IN A QUIET CUL DE SAC
- KITCHEN/BREAKFAST ROOM
- TWO DOUBLE BEDROOMS
- OFF ROAD PARKING FOR MULTIPLE VEHICLES
- CLOSE TO MULTIPLE SCHOOLS
- GOOD SIZED LOUNGE
- CONSERVATORY
- THREE PIECE FAMILY BATHROOM
- CLOSE TO OAKLEYVALE SHOPS
- WALKING DISTANCE TO GREEN SPACE

### Entrance Hall

Entered via a double glazed door, radiator, door to:

### Lounge

13'6 x 13'0 (4.11m x 3.96m)

Double glazed window to front elevation, radiator, stairs rising to first floor landing, tv point, telephone point, door to:

### Kitchen/Breakfast Room

12'2 x 8'9 (3.71m x 2.67m)

Fitted to comprise a range of base and eye level units with a single steel sink and drainer, electric hob with extractor, integrated oven and microwave, space for free standing fridge/freezer, space for automatic washing machine, double glazed window and door to conservatory.













### Conservatory

11'3 x 9'3 (3.43m x 2.82m)

Brick built base, double French doors to rear elevation.

### First Floor Landing

Loft access, doors rising to:

### Bedroom One

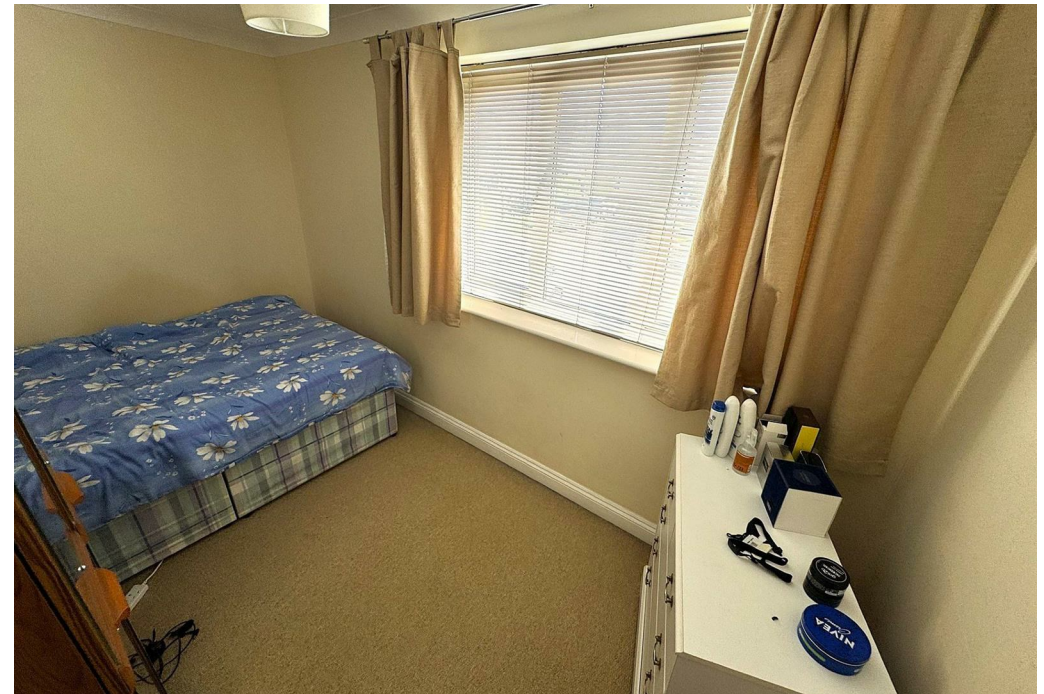
12'2 x 8'4 (3.71m x 2.54m)

Double glazed window to front elevation, radiator, built in wardrobe.

### Bedroom Two

12'2 x 7'0 (3.71m x 2.13m)

Double glazed window to rear elevation, radiator.









## **Bathroom**

5'2 x 4'0 (1.57m x 1.22m)

Fitted to comprise a three piece suite consisting of a panel bath with electric shower over, low level pedestal, low level wash hand basin, radiator, above stairs storage cupboard with combi boiler.

## **Outside**

Front: A laid lawn leads to a tandem length driveway which provides off road parking.

Rear: A patio area leads onto a laid lawn and is enclosed by timber fencing to all sides.



















Illustration for identification purposes only, measurements are approximate, not to scale.  
Produced by Elements Property



