



19 Gainsborough Road, Corby, NN18 0RG



£205,000

Stuart Charles are delighted to offer FOR SALE with NO CHAIN this three bedroom home located in the desirable Town Centre area of Corby. Set withing walking distance to the multiple schools, the town centre and Lidl an early viewing is recommended to avoid missing out on this home. The accommodation comprises to the ground floor of an open entrance hall, lounge/diner and modern kitchen. To the First floor are three good sized bedrooms, a two piece bathroom suite and a separate W.C. Outside to the front is a low maintenance laid lawn which leads to gated access to the rear elevation. To the rear a large patio area leads onto a large laid lawn and is enclosed by timber fencing to all sides. Call now to view!!.

- NO CHAIN
- MODERN KITCHEN
- TWO PIECE BATHROOM
- POTENTIAL TO CREATE OFF ROAD PARKING SUBJECT TO PERMISSIONS
- WALKING DISTANCE TO TOWN CENTRE
- LARGE LOUNGE/DINER
- THREE GOOD SIZED BEDROOMS
- SEPERATE W.C
- WALKING DISTANCE TO PRIMARY/SECONDARY SCHOOLS
- RECENTLY REDECORATED AND RECARPETED

Entrance Hall

Entered via a double glazed door, radiator, storage cupboards, stairs rising to first floor landing, space for white goods, doors to:

Lounge/Diner

Double glazed window to front and rear elevation, two radiators, tv point, telephone point, door to:

Kitchen

Fitted to comprise a range of base and eye level units with a single sink and drainer, gas hob with extractor, electric oven, space for automatic washing machine, space for fridge/freezer, double glazed window and door to rear elevation.

First Floor Landing

Stairs rising from ground floor, loft access, airing cupboard with Combi boiler, doors to:







Bedroom One

Double glazed window to front elevation, radiator.

Bedroom Two

Double glazed window to rear elevation, radiator.

Bedroom Three

Double glazed window to rear elevation, radiator.

Bathroom

Fitted to comprise a two piece suite consisting of a panel bath with mixer shower tap, low level wash hand basin, radiator, double glazed window to rear elevation.





W.C

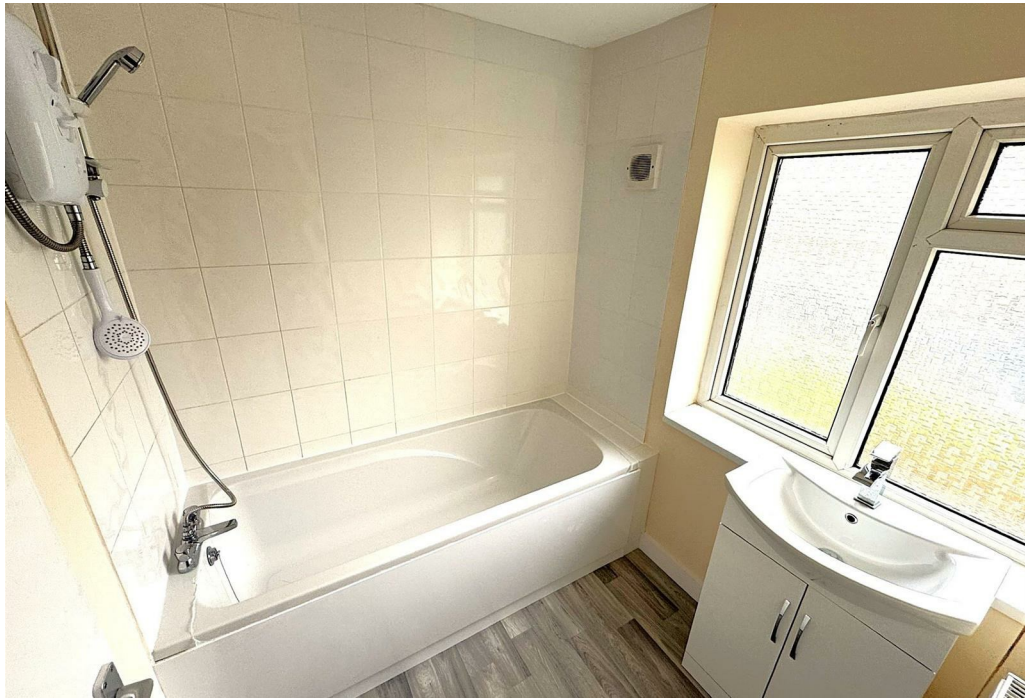
Fitted to comprise a two in one pedestal/wash hand basin.

Outside

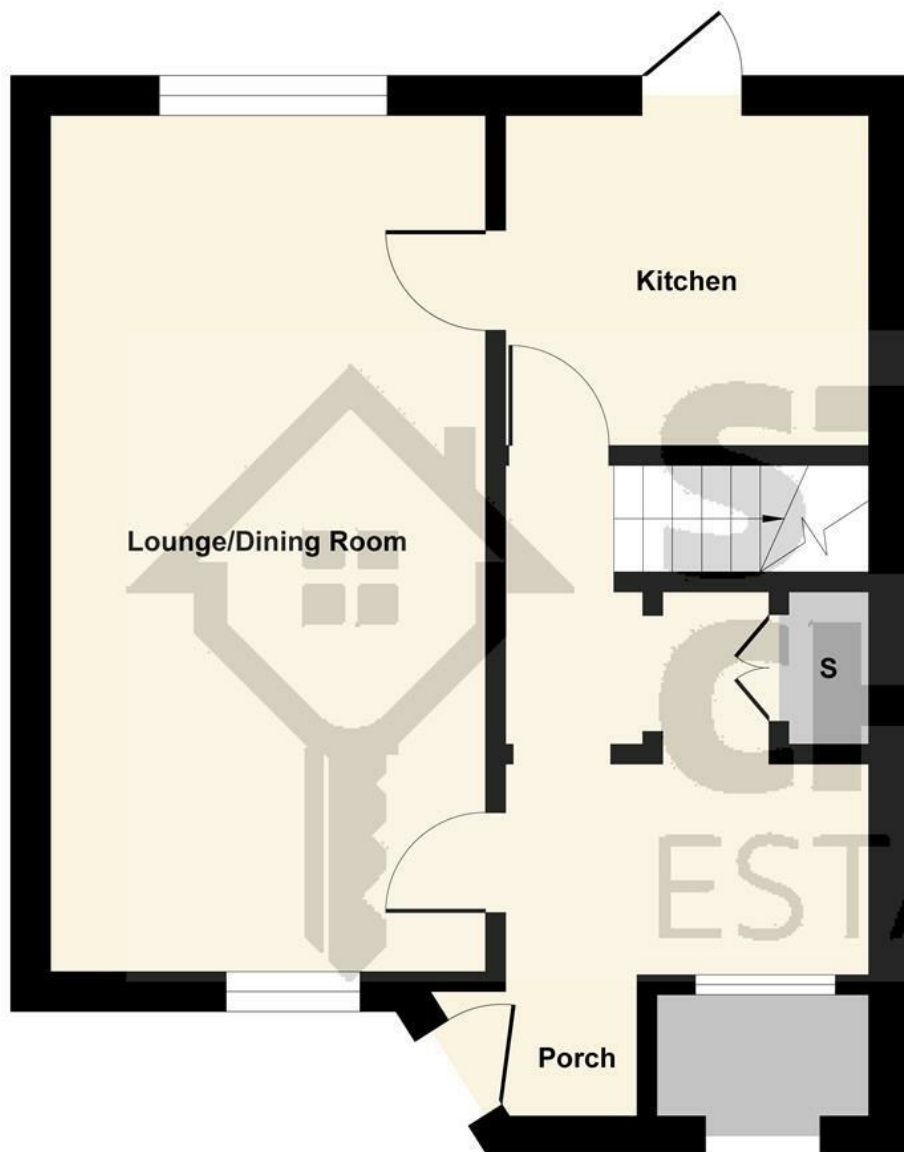
Front: A low maintenance laid lawn with gated access to the rear.

Rear: A large patio area leads onto a laid lawn and is enclosed by timber fencing to all sides.

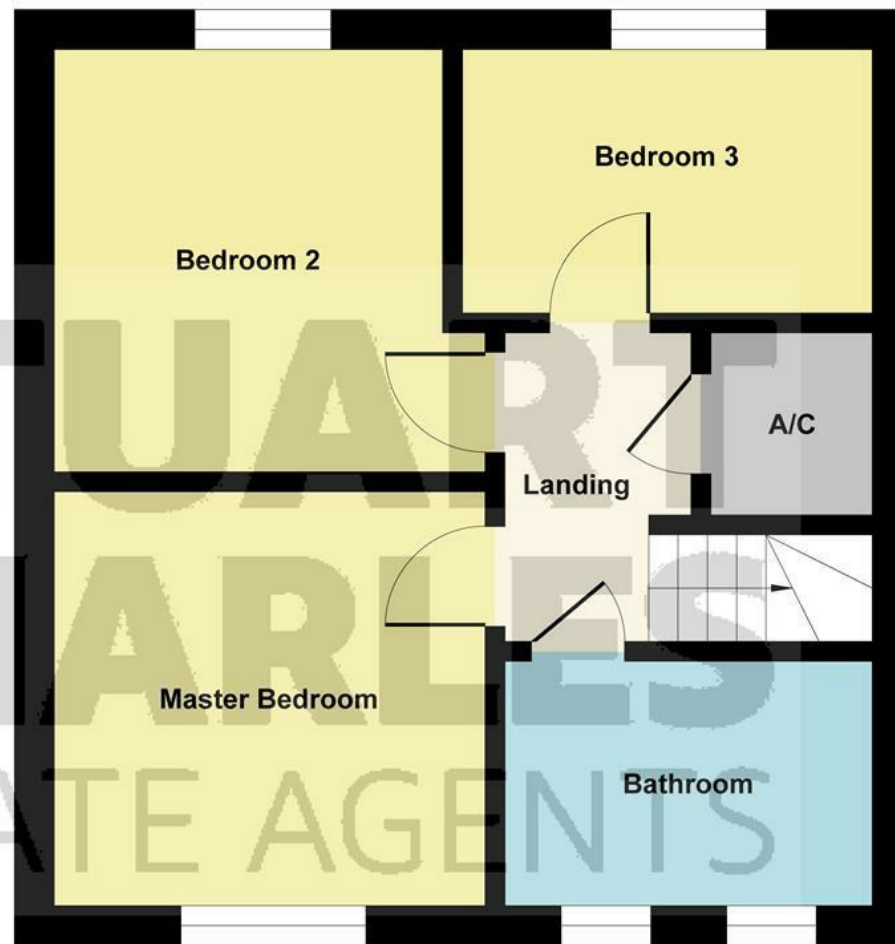








Ground Floor



First Floor

Illustration for identification purposes only, measurements are approximate, not to scale.
Produced by Elements Property

