



31 Manor Drive, Corby, NN18 0TN

£225,000

Stuart Charles are delighted to offer for sale with this TWO bedroom semi detached bungalow located in this desirable cul de sac on the Knights Lodge area of Corby. Positioned on a quiet walk and with a large south facing garden an early viewing is recommended to avoid missing out on this home. The accommodation comprises of a large entrance hall, galley kitchen, large lounge/diner, two good sized bedrooms with the master bedroom benefiting from built in wardrobes, and a three piece shower room. To the front is a laid lawn with a path to the front door. To the rear is a patio area that leads to a laid lawn with mature bushes and plants boarders, there is also a garden shed, all enclosed by timber fence and brick wall surround. Call now to view!!

- READY TO MOVE INTO
- LOCATED IN A QUIET CUL DE SAC
- NEW BATHROOM
- TWO DOUBLE BEDROOMS
- WELL PRESENTED THROUGHOUT
- REFITTED KITCHEN
- COMBI BOILER

Entrance Hall

Entered via a double glazed door to side elevation, radiator, storage cupboard, telephone point, doors to:

Kitchen

11'1 x 7'7 (3.38m x 2.31m)

Fitted to comprise a range of base and eye level units with a single sink and drainer, integrated appliances, storage cupboard, double glazed window to front elevation.

Lounge

17'9 x 10 (5.41m x 3.05m)

Double glazed window to front elevation, radiator, tv point.

Bedroom One

13'4 x 10 (4.06m x 3.05m)

Built in wardrobes, radiator, double glazed window to rear elevation.







Bedroom Two

10'4 x 8'6 (3.15m x 2.59m)

Double glazed French doors to rear elevation, radiator.

Bathroom

6'5 x 5'6 (1.96m x 1.68m)

Featuring a three piece suite with a separate shower cubicle, low level pedestal and hand basin, radiator, double glazed window to side elevation.





Outside

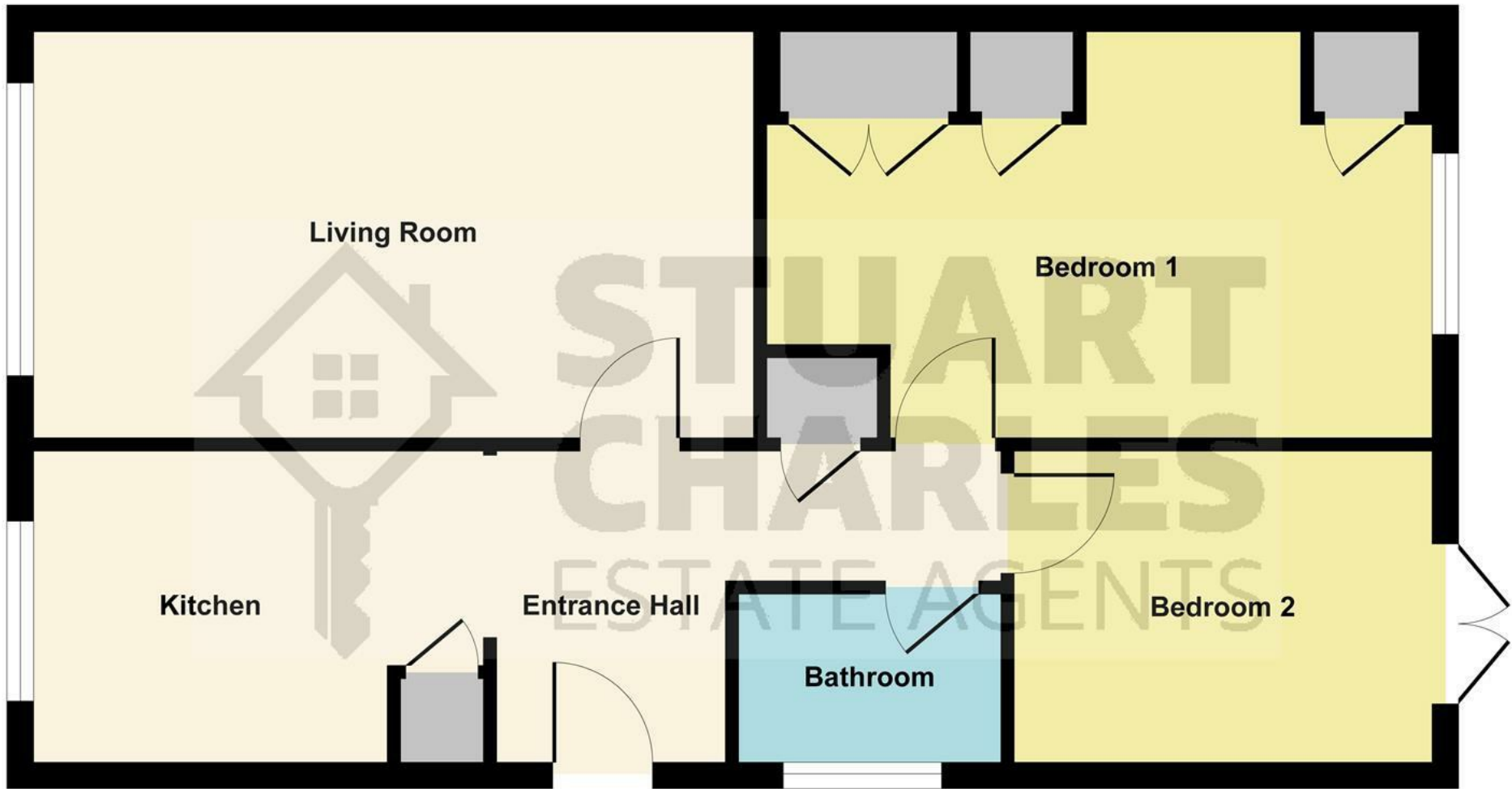
To the front is a laid lawn with path the front door.

To the rear is a patio area that leads to a laid lawn with mature bushes and plants borders, there is also a garden shed, all enclosed by timber fence and brick wall surround.

Garage

Up and over doors





Ground Floor

Illustration for identification purposes only, measurements are approximate, not to scale.
Produced by Elements Property

