



47 York Road, Corby, NN18 0NY





**£204,000**

Stuart Charles are delighted to offer for sale with NO CHAIN this three bedroom home located a short walk from Corby town centre. Positioned within walking distance of several schools and local shops an early viewing is recommended to avoid missing out on this home. The accommodation to the ground floor comprises of an entrance hall, open area to include, lounge, kitchen/diner. There is also a utility room. To the first floor are three good sized bedrooms, and a refitted bathroom. Outside to the front is a laid lawn with small fence surround. To the rear is a patio that leads to a laid lawn with a wooden pergola. There is also a summer house. Call now to book a viewing!!

- NEW BATHROOM
- THREE GOOD SIZE BEDROOMS
- READY TO MOVE INTO
- GOOD TRANSPORT LINKS
- MODERN COMBI BOILER
- OPEN PLAN LIVING AREA
- CLOSE TO LOCAL SCHOOLS
- C EPC RATING

#### **Entrance Hall**

Entered via a double glazed door, radiator, stairs rising to first floor landing, door to

#### **Utility Room**

7'3 x 5'6 (2.21m x 1.68m)

Under stairs storage, plumbing for automatic washing machine, space for tumble dryer.

#### **Lounge/Diner**

21'9 x 10'11 (6.63m x 3.33m)

Double glazed window to front elevation, radiators, tv point, door to:

#### **Kitchen**

9'8 x 8'0 (2.95m x 2.44m)

Fitted to comprise a range of base and eye level units with a single steel sink and drainer, integrated oven and hob, space for automatic washing machine, double glazed French door to rear elevation.













## Landing

Loft access, doors to:

### Bedroom One

11'10 x 11'1 (3.61m x 3.38m)

Double glazed window to rear elevation, radiator.

### Bedroom Two

10'3 x 10'2 (3.12m x 3.10m)

Double glazed window to front elevation, radiator.

### Bedroom Three

10'0" x 7'3" (3.07m x 2.21m)

Double glazed window to rear elevation, radiator.









## Bathroom

5'7 x 5'5 (1.70m x 1.65m)

Fitted to comprise a three piece suite featuring a bath with shower over, low level pedestal, low level wash hand basin, radiator, double glazed window to front elevation.

## Outside

To the front is a laid lawn with path to the front door.

To the rear is a patio that leads to a laid lawn. There is also a summer house.

















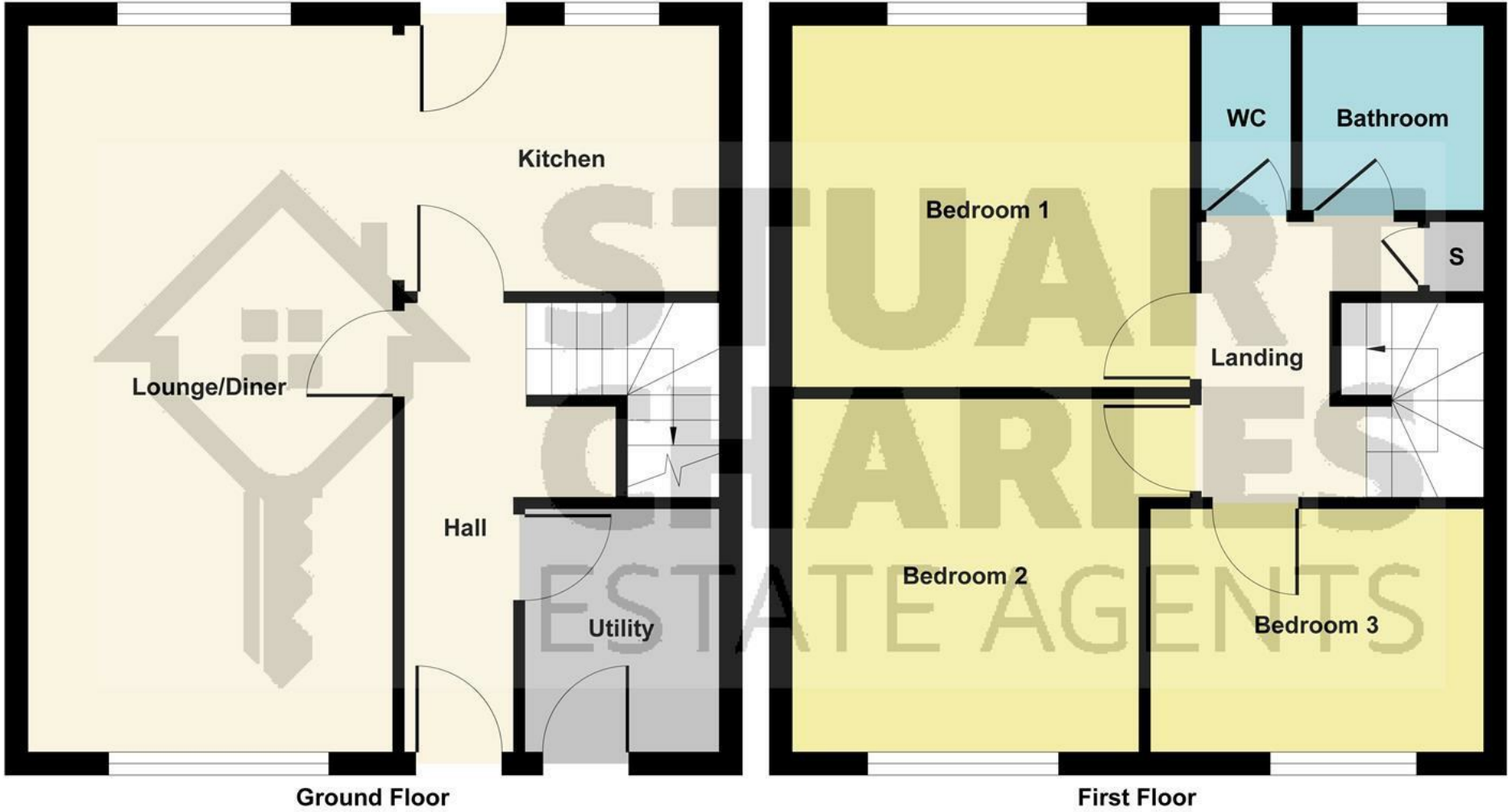


Illustration for identification purposes only, measurements are approximate, not to scale.

Produced by Elements Property



