



**STUART
CHARLES**
ESTATE AGENTS



Station Road

, Rushton, NN14 1RL

£1,050 Per month



Station Road

, Rushton, NN14 1RL

£1,050 Per month



lounge

16.4 x 11.13 (4.88m.1.22m x 3.35m.3.96m)

kitchen/diner

16.7 x 8.8 (4.88m.2.13m x 2.44m.2.44m)

guest w/c

5.7 x 2.4 (1.52m.2.13m x 0.61m.1.22m)

master bedroom

16.4 x 8.4 (4.88m.1.22m x 2.44m.1.22m)

en-suite

6.7 x 4.5 (1.83m.2.13m x 1.22m.1.52m)

bedroom two

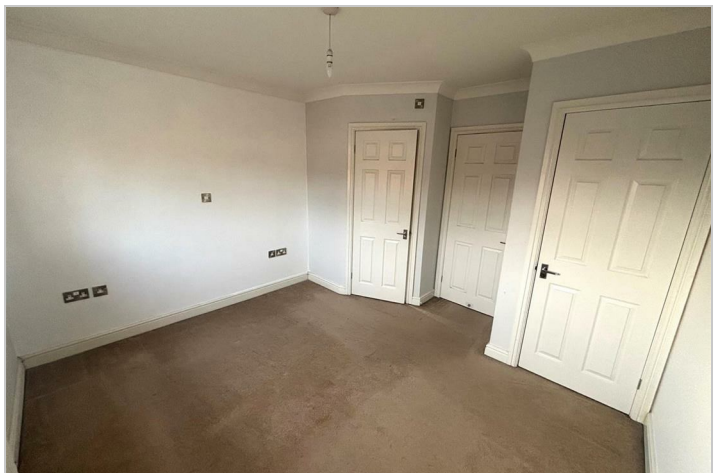
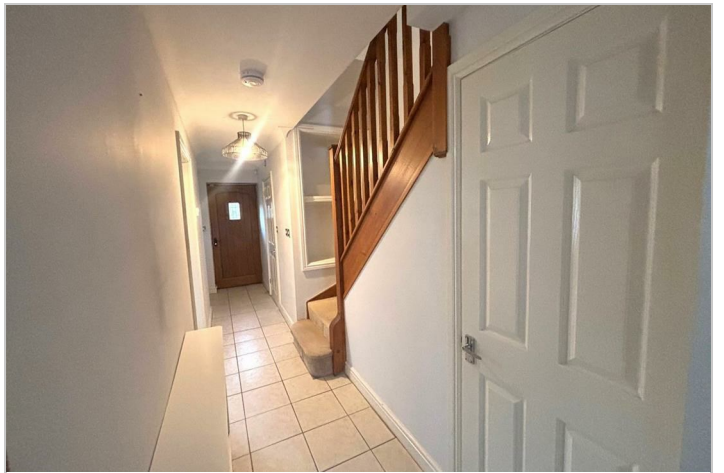
10 x 8.5 (3.05m x 2.44m.1.52m)

bedroom three

12.12 x 6.7 (3.66m.3.66m x 1.83m.2.13m)

family bathroom

6.7 x 5.15 (1.83m.2.13m x 1.52m.4.57m)



Road Map



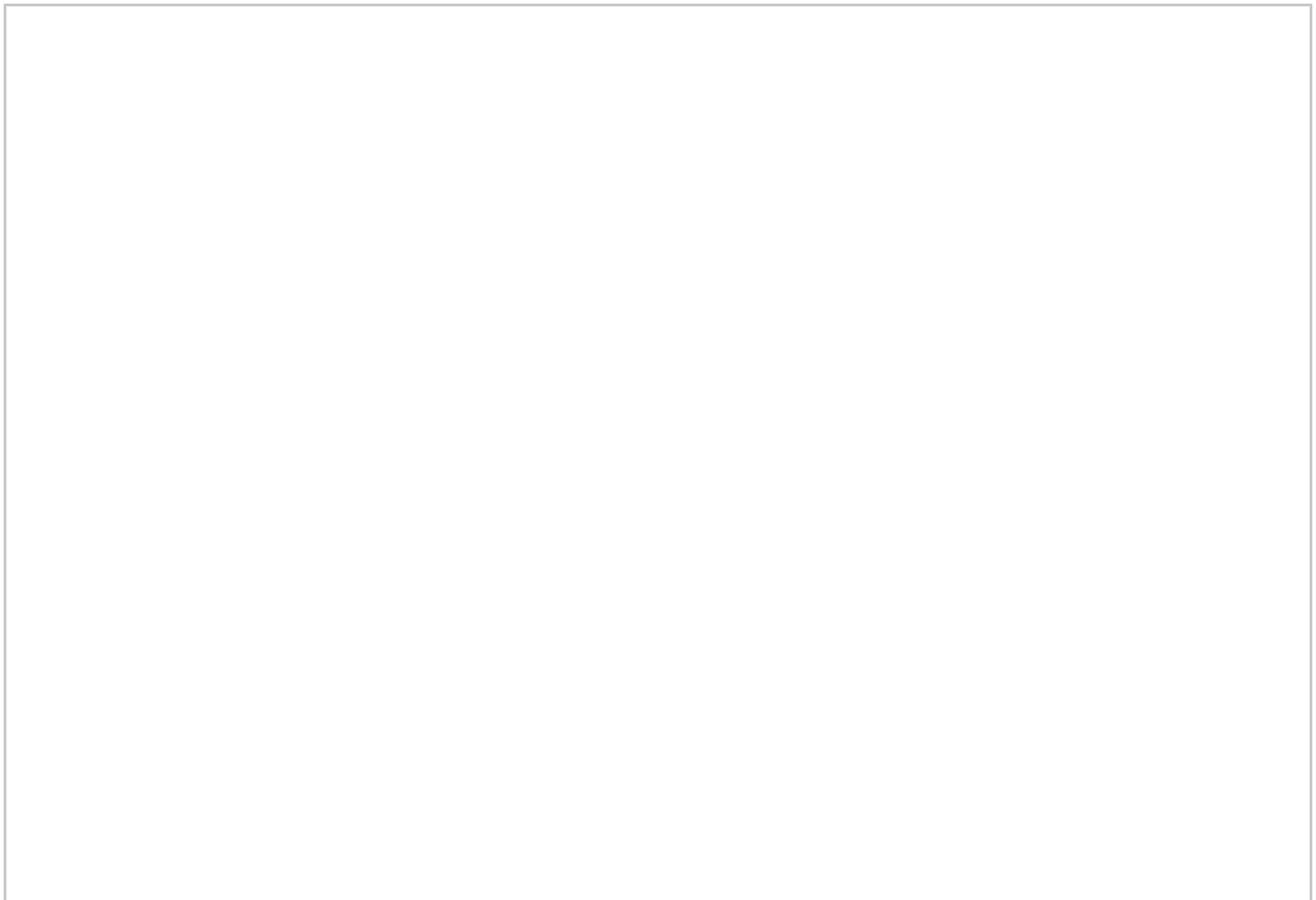
Hybrid Map



Terrain Map



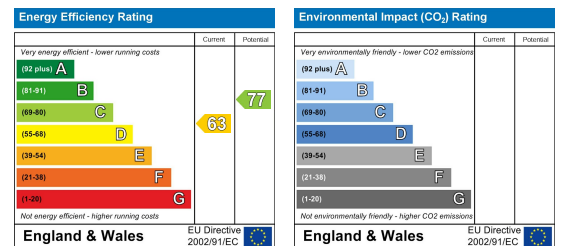
Floor Plan



Viewing

Please contact our Stuart Charles Estate Agents Office on 01536 234264 if you wish to arrange a viewing appointment for this property or require further information.

Energy Efficiency Graph



These particulars, whilst believed to be accurate are set out as a general outline only for guidance and do not constitute any part of an offer or contract. Intending purchasers should not rely on them as statements of representation of fact, but must satisfy themselves by inspection or otherwise as to their accuracy. No person in this firm's employment has the authority to make or give any representation or warranty in respect of the property.