



28 Plumpton Court, Corby, NN18 0JW

£120,000

Stuart Charles are delighted to offer for sale with NO CHAIN this TWO DOUBLE bedroom first floor flat located in the Beanfield area of Corby. This home is ideal for a first time buyer or someone downsizing. The accommodation comprises of an entrance hallway which gives access to the kitchen, lounge/diner, three piece bathroom suite and two double bedrooms. There is also a balcony. Outside is a large shared front garden, secure storage area and a communal drying area to the rear. An early viewing is recommended to avoid missing out on this home.

- NO CHAIN
- BALCONY
- LOW COUNCIL TAX BAND
- TWO OUTSIDE STORAGE SHEDS
- TWO DOUBLE BEDROOMS
- LOW SERVICE CHARGES
- READY TO MOVE INTO
- CLOSE TO LOCAL SHOPS

Entrance Hall

Entered via a double glazed door to the side elevation, doors to:

Lounge

15'1 x 8'6 (4.60m x 2.59m)

Tv point, telephone point, radiator, double glazed window to front elevation.

Dining Area

11'2 x 10'0 (3.40m x 3.05m)

Double glazed window to the front elevation, double glazed door to the balcony.

Kitchen

10'5 x 5'6 (3.18m x 1.68m)

Fitted to comprise a range of base and eye level units with a sink and drainer, gas hob and oven, space for fridge/freezer, double glazed window to







rear elevation, wall mounted combi boiler.

Balcony

Bedroom One

12'2 x 10'11 (3.71m x 3.33m)

Double glazed window to rear elevation, radiator.

Bedroom Two

10'10 x 10' (3.30m x 3.05m)

Double glazed window to front elevation, radiator.

Bathroom

6'2 x 5'5 (1.88m x 1.65m)

Fitted to comprise a three piece suite with a panel bath and electric shower over, a low level wash hand basin with vanity unit, a low level pedestal, radiator, double glazed window to rear elevation.

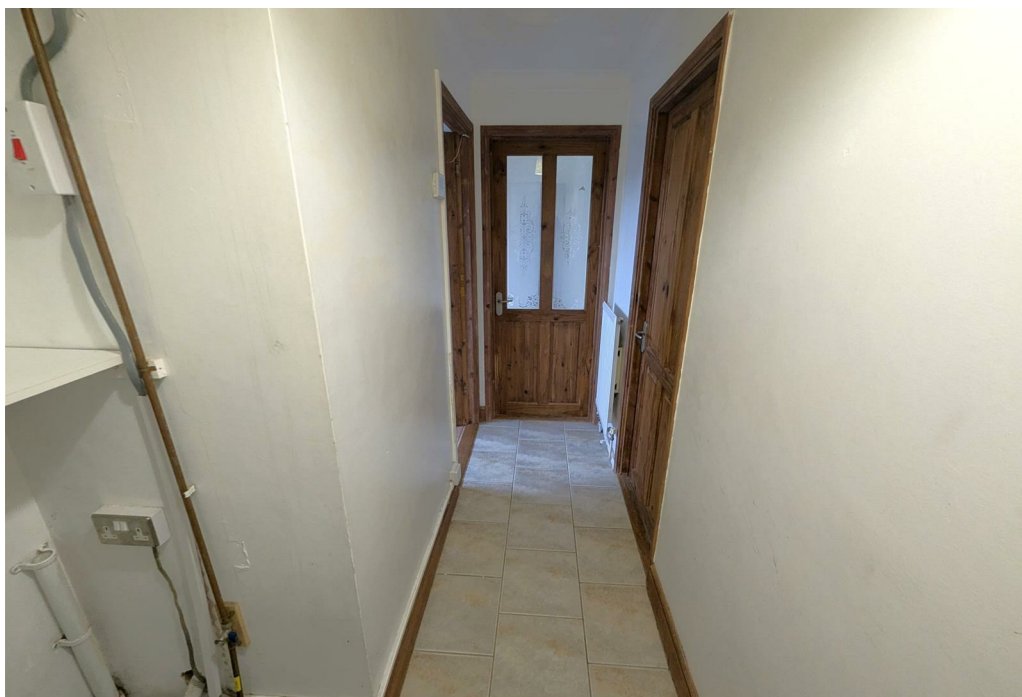








Illustration for identification purposes only, measurements are approximate, not to scale.
Produced by Elements Property

Energy Efficiency Rating		Current	Potential
Very energy efficient - lower running costs			
(92 plus) A			
(81-91) B			
(69-80) C			
(55-68) D			
(39-54) E			
(21-38) F			
(1-20) G			
Not energy efficient - higher running costs			
England & Wales		EU Directive 2002/91/EC	