



18 Uist Walk, Corby, NN17 2LZ



**STUART  
CHARLES**  
ESTATE AGENTS

**£185,000**

Stuart Charles are delighted to offer for sale this TWO DOUBLE bedroom home offered for sale on the popular lodge park estate. Located just a short walk from the local primary and secondary schools this home would make an ideal purchase for a first time buyer or investor. The accommodation on offer comprises of a large entrance hall giving you access to the lounge and kitchen/diner. To the first floor are two double bedrooms and a separate W.C and bathroom. To the rear there is a mixture of decking, laid lawn, and mature plants and bushes boarder, all enclosed by timber fence surround with rear gated access. There is also a garage and parking. Call now to book a viewing!!!

- GARAGE AND DRIVEWAY
- TWO DOUBLE BEDROOMS
- GOOD TRANSPORT LINKS
- CLOSE TO LOCAL SCHOOLS
- READY TO MOVE INTO
- LARGE KITCHEN DINER

### Entrance Hall

Entered via a double glazed door, radiator, storage cupboard, stairs rising to first floor landing, doors to:

### Kitchen/Diner

17'7 x 10'5 (5.36m x 3.18m)

Featuring a range of base and eye level units with a one and a half bowl steel sink and drainer, gas hob and extractor hood, double electric oven, integrated appliances, double glazed windows

and French doors to the rear elevation, radiator, door to:

### Lounge

12'8 x 11'3 (3.86m x 3.43m)

Radiator, tv point, double glazed window to rear, door to:

### Landing

Double glazed window to front elevation, airing cupboard, storage cupboards, doors to:







### Bedroom One

12'9 x 11'6 (3.89m x 3.51m )

Double glazed window to rear, radiator.

### Bedroom Two

11'6 x 10'6 (3.51m x 3.20m)

Double glazed window to rear, radiator.

### WC

Featuring a low level pedestal, double glazed window to the front.



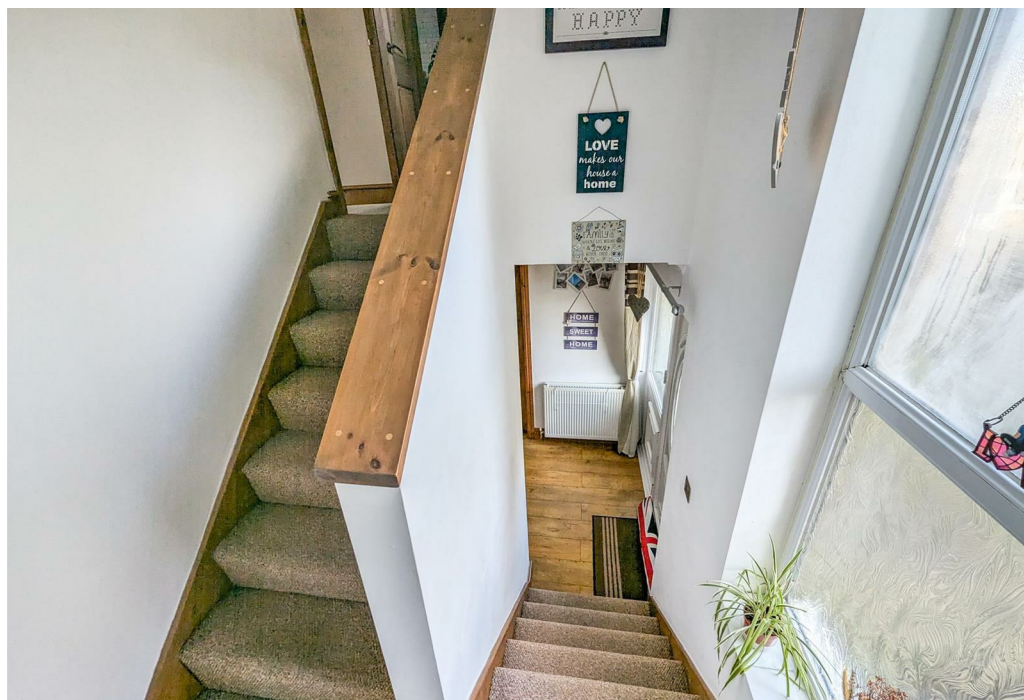


## Bathroom

7'8 x 5'9 (2.34m x 1.75m)

Fitted to comprise a two piece suite comprising a low level panel bath with mixer shower, low level wash hand basin, radiator, double glazed window to front elevation.

## Outside











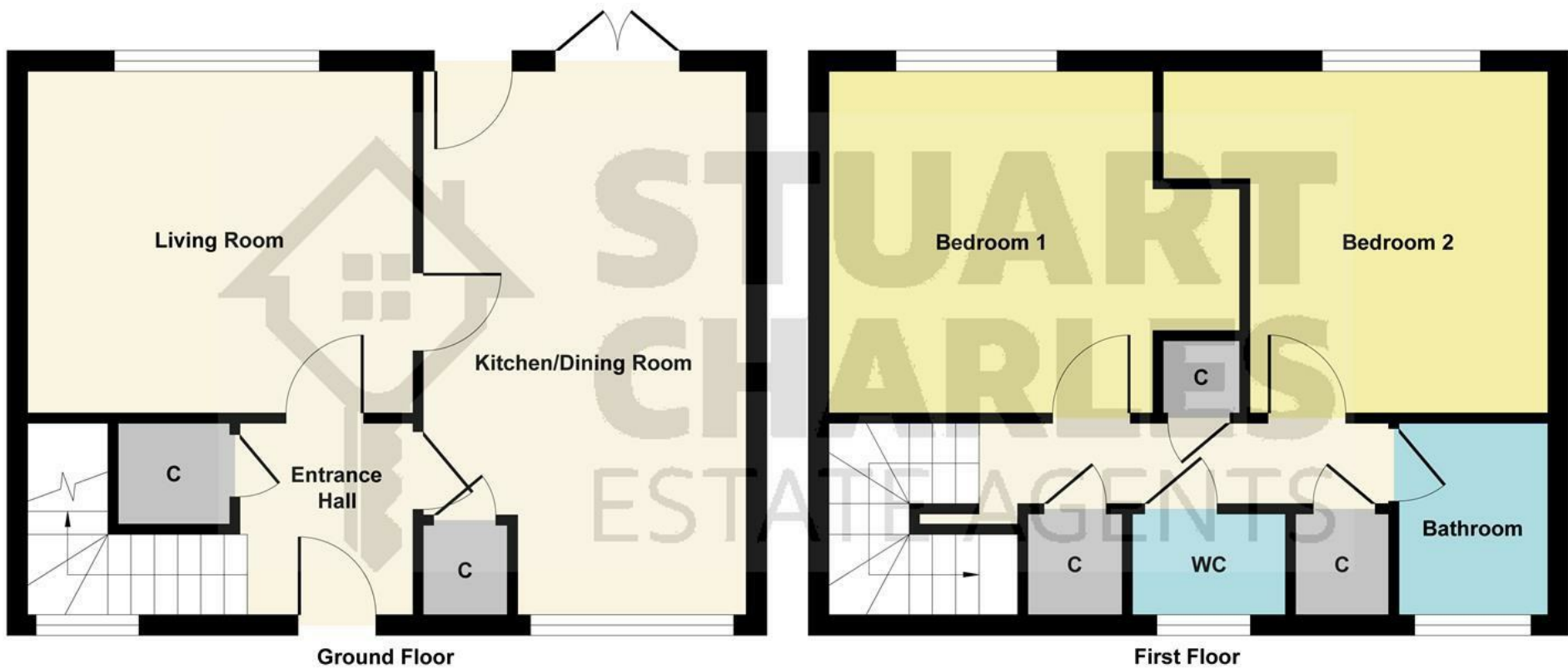


Illustration for identification purposes only, measurements are approximate, not to scale.

Produced by Elements Property

