



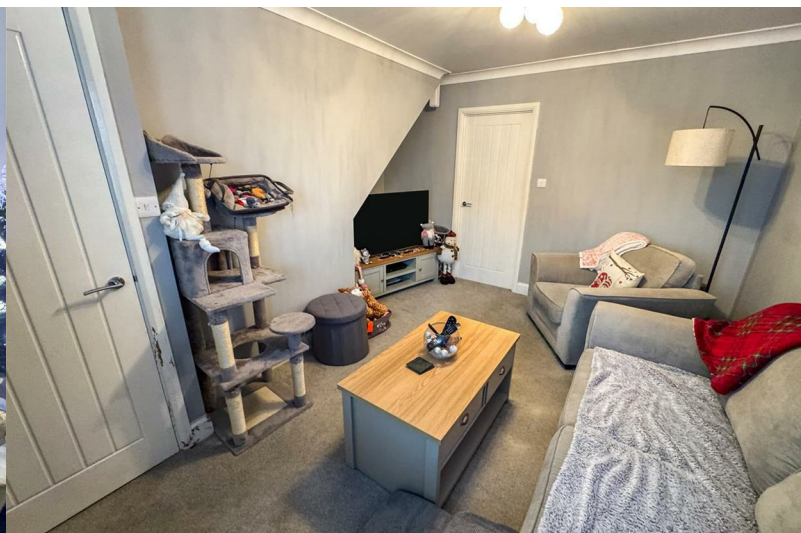
**STUART  
CHARLES**  
ESTATE AGENTS



## Inwood Close

, Corby, NN18 8LG

£205,000



# Inwood Close

, Corby, NN18 8LG

£205,000



## Entrance Hall

Entered via a double glazed front door, doors to:

## Living Room

12'11" x 12'11" (3.96m x 3.96m)

Double glazed window to front elevation, radiator, TV and telephone points, coving to ceiling, radiator, door to:

## Kitchen

12'0" x 8'11" (3.66m x 2.74m)

Double glazed window to rear elevation, obscure single glazed door to rear elevation, fitted with a range of base and eye level units, stainless steel sink and drainer with chrome mixer tap, integrated double oven, gas hob, space for fridge/freezer, plumbing for space, space for automatic washing machine, extractor, radiator, Double glazed window to rear elevation, single glazed door to rear elevation

## First Floor Landing

Airing cupboard, loft access, doors to:

## Bedroom One

12'0" x 10'0" (3.68m x 3.05m)

Radiator, double glazed window to front elevation.

## Bedroom Two

12'0" x 6'0" (3.66m x 1.83m)

Double glazed window to rear elevation, radiator.

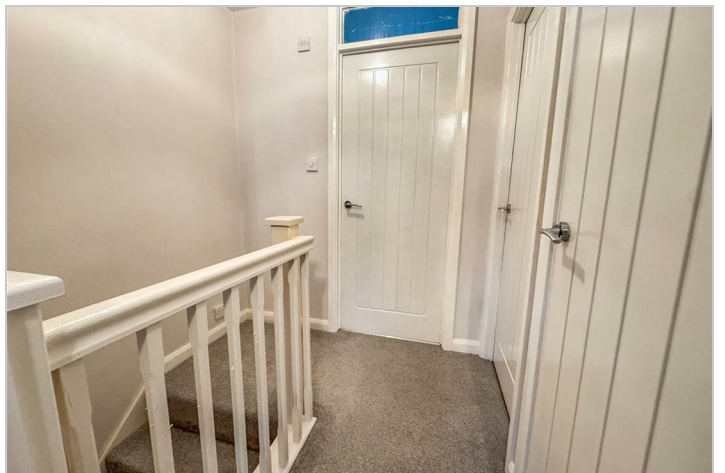
## Bathroom

Fitted to comprise of a low level pedestal, low level wash hand basin, mixer shower, extractor, radiator, double glazed window to rear elevation.

## Outside

Front - Laid to lawn, a driveway providing off road parking, gated pedestrian access to rear elevation.

Rear - Laid lawn with large patio seating area, shed, enclosed by timber fencing to all sides.



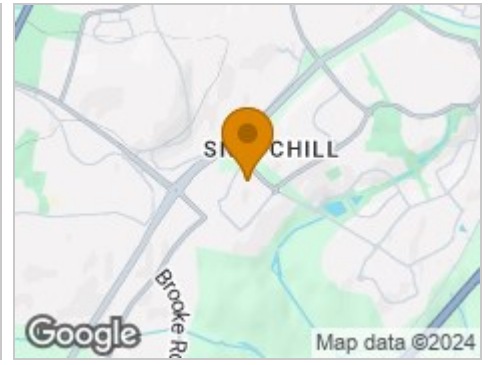
### Road Map



### Hybrid Map



### Terrain Map



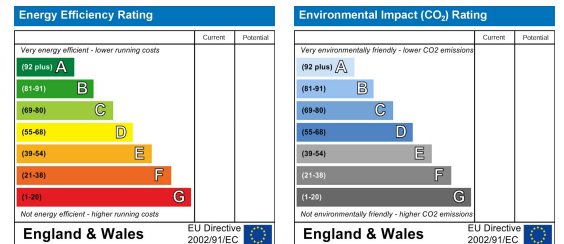
### Floor Plan



### Viewing

Please contact our Stuart Charles Estate Agents Office on 01536 234264 if you wish to arrange a viewing appointment for this property or require further information.

### Energy Efficiency Graph



These particulars, whilst believed to be accurate are set out as a general outline only for guidance and do not constitute any part of an offer or contract. Intending purchasers should not rely on them as statements of representation of fact, but must satisfy themselves by inspection or otherwise as to their accuracy. No person in this firm's employment has the authority to make or give any representation or warranty in respect of the property.