



17 Lark Close, Corby, NN18 8RS



£1,200 Per month

Stuart Charles are delighted to offer TO LET this three bedroom terraced family home located in the Oakley vale area of Corby. Situated a short walk away from Oakley vale shops and primary school an early viewing is recommended to avoid missing out on this home. The accommodation comprises to the ground floor of an entrance hall, kitchen/breakfast room, guest W.C and a lounge. To the first floor tow bedrooms and a three piece family bathroom. To the second floor is the master bedroom with dressing area and en-suite. Outside to the front is a low maintenance lawn while to the rear a patio area leads up onto a laid lawn. Off road parking is located in front of the garage. Call now to view!!.

- MODERN KITCHEN/BREAKFAST ROOM
- LOUNGE/DINER
- THREE PIECE FAMILY BATHROOM
- PRIVATE REAR GARDEN
- WALKING DISTANCE TO SHOPS
- GUEST W.C
- THREE GOOD SIZED ROOMS
- DRESSING AREA AND EN-SUITE TO MASTER BEDROOM
- GARAGE AND DRIVEWAY
- WALKING DISTANCE TO PRIMARY SCHOOL

Entrance Hall

Entry via a double glazed door, radiator, stairs to first floor landing, doors to:

Kitchen/Breakfast Room

15'10 x 6'0 (4.83m x 1.83m)

Fitted to comprise a range of base and eye level units with a one and a half sink and drainer, gas hob with extractor, electric oven, space for free standing fridge/freezer, space for automatic washing machine, radiator,

double glazed window to front elevation.

Lounge

12'9" x 14'5" (3.9 x 4.4)

Double glazed French doors to rear elevation, radiator, tv point, telephone point.

First Floor Landing

Double glazed window to the front elevation, stairs rising to second floor landing, doors to:







Bedroom Two

12'5" x 12'1" (3.8 x 3.7)

This room features a double glazed window to the rear elevation, radiator.

Bedroom Three

10'9" x 6'2" (3.3 x 1.9)

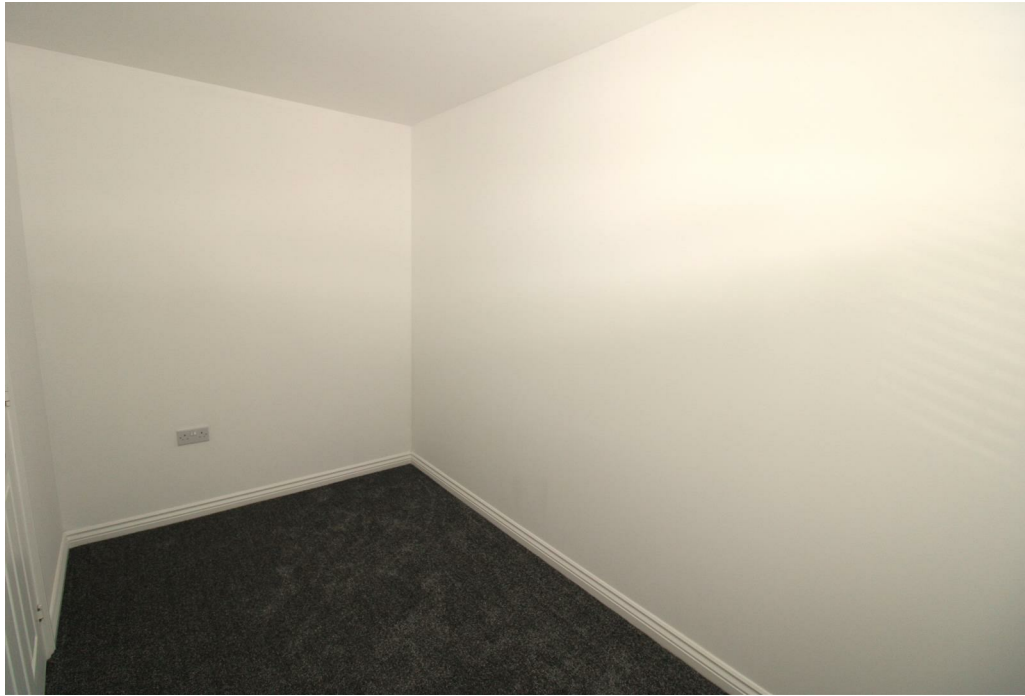
Double glazed window to front elevation, radiator.

Bathroom

6'9 x 6'3 (2.06m x 1.91m)

Fitted to comprise a three piece suite consisting of panel bath with mixer shower tap, low level wash hand basin, low level pedestal, radiator.





Second Floor Landing

Staircase from the first floor landing, radiator and door to the master bedroom.

Bedroom One

12'9" x 9'10" x 13'1" (3.9 x 3'4)

This room features two skylight windows to the rear aspect, built in wardrobes, radiator, loft access, telephone point and door to the ensuite.

En-Suite

A three piece suite comprising a shower cubicle, wash hand basin and pedestal, vanity unit, extractor fan, shaver point, radiator and an obscure double glazed window to the front aspect.

Outside

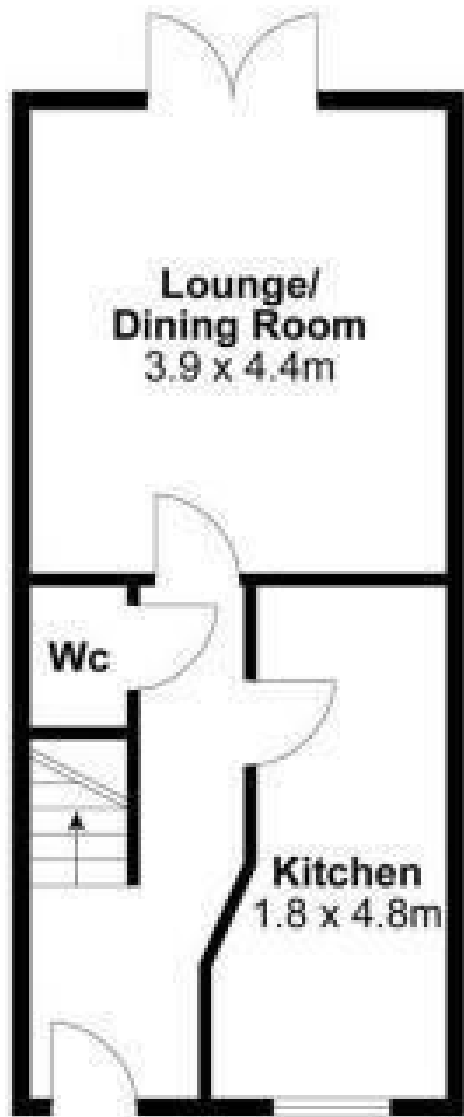




Front: A low maintenance laid lawn is enclosed by low level shrubs.

Rear: A patio area leads onto a laid lawn and has gated access to the garage area.

Garage: With up and over door, parking space to the front.



For identification only not to scale

