



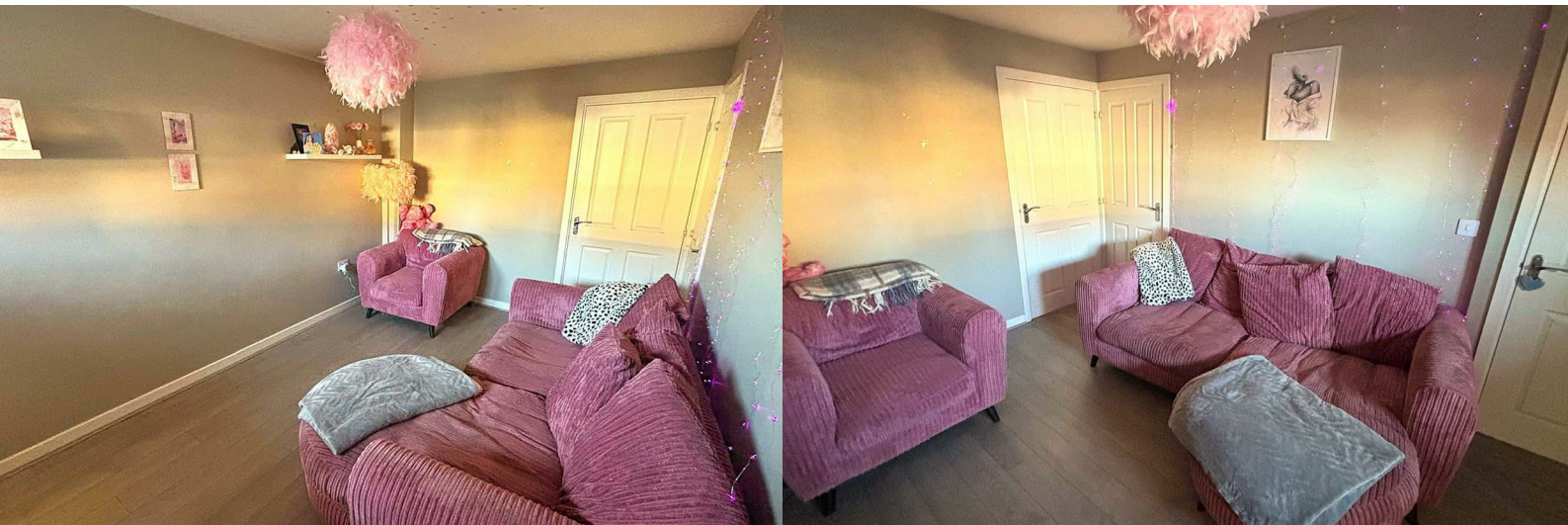
**STUART
CHARLES**
ESTATE AGENTS



Yates Close

Weldon, Corby, NN17 3LS

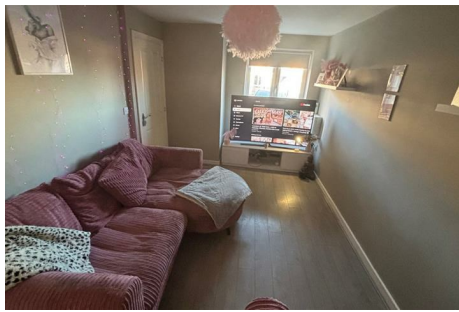
£950 Per month



Yates Close

Weldon, Corby, NN17 3LS

£950 Per month



Entrance Hall

Entered via a double glazed door, radiator, stairs rising to first floor landing, doors to:

Guest W.C

Featuring a two piece suite with a low level pedestal, low level wash hand basin, radiator, double glazed window to front elevation.

Lounge

14'8 x 9'5 (4.47m x 2.87m)

Double glazed window to front elevation, radiator, tv point, telephone point, under stairs storage, door to:

Kitchen/Diner

12'3 x 7'7 (3.73m x 2.31m)

Featuring a range of base and eye level units with a one and a half bow steel sink and drainer, gas hob with electric oven and extractor, space for automatic washing machine, space for dishwasher, space for free standing fridge/freezer, radiator, wall mounted combi boiler, double glazed window to rear, double glazed French doors to rear.

First Floor Landing

Bedroom One

11'9 x 7'7 (3.58m x 2.31m)

Double glazed window to rear, tv point, radiator.

Bedroom Two

12'3 x 8'2 (3.73m x 2.49m)

Two double glazed windows to front elevation, radiator, built in wardrobe.

Bathroom

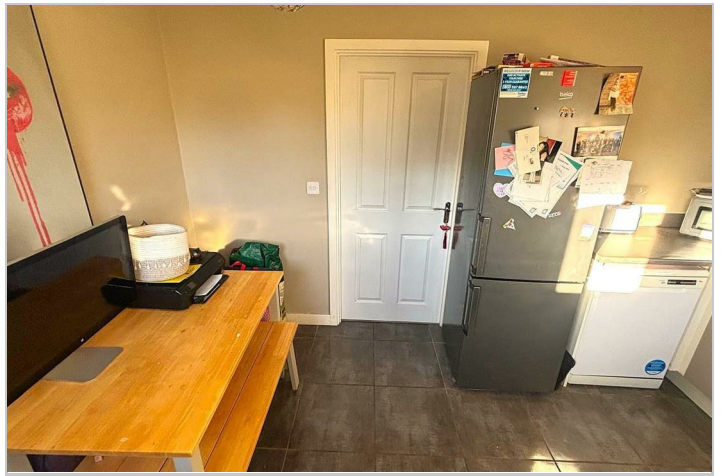
5'9 x 5'1 (1.75m x 1.55m)

Featuring a three piece suite with a panel bath and mains feed shower over, low level wash hand basin, low level pedestal, radiator, double glazed window to side elevation.

Outside

Front: Consisting of a low maintenance paved area.

Rear: A patio area leads onto a laid lawn and is enclosed by timber fencing to all sides.



Road Map



Hybrid Map



Terrain Map



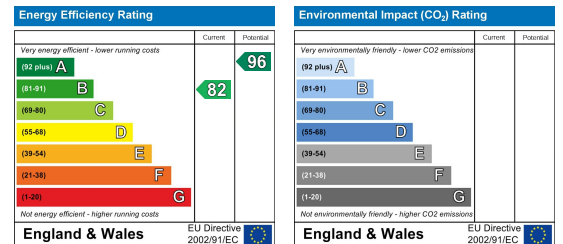
Floor Plan



Viewing

Please contact our Stuart Charles Estate Agents Office on 01536 234264 if you wish to arrange a viewing appointment for this property or require further information.

Energy Efficiency Graph



These particulars, whilst believed to be accurate are set out as a general outline only for guidance and do not constitute any part of an offer or contract. Intending purchasers should not rely on them as statements of representation of fact, but must satisfy themselves by inspection or otherwise as to their accuracy. No person in this firm's employment has the authority to make or give any representation or warranty in respect of the property.