



**STUART
CHARLES**
ESTATE AGENTS



Chelveston Drive

, Corby, NN17 2QJ

£170,000



Chelveston Drive

, Corby, NN17 2QJ

£170,000



Entrance Hall

Entered via a double glazed door, radiator, stairs rising to first floor landing. doors to:

Lounge

13'3 x 10'3 (4.04m x 3.12m)

Double glazed window to front elevation, radiator, tv point, door to dining room.

Kitchen/Diner

21'4 x 9'9 (6.50m x 2.97m)

Fitted to comprise a range of base and eye level units with a one and a half bowl sink and drainer, space for free standing gas cooker, space for dishwasher, double glazed door to side elevation, double glazed window to rear elevation .

Landing

Double glazed window to side elevation.

Bedroom One

14'0 x 10'3 (4.27m x 3.12m)

Double glazed window to rear elevation, radiator, built in wardrobe.

Bedroom Two

14'0 x 9'9 (4.27m x 2.97m)

Double glazed window to front elevation, radiator, two built in wardrobes.

Bedroom Three

9'9 x 6'9 (2.97m x 2.06m)

Double glazed window to front elevation, radiator, built in wardrobe.

Bathroom

7'4 x 5'5 (2.24m x 1.65m)

Fitted to comprise a three piece suite with a panel bath and electric shower over, low level wash hand basin, low level pedestal, radiator, combi boiler located in cupboard, access to loft, two double glazed windows to side elevation.

Outside

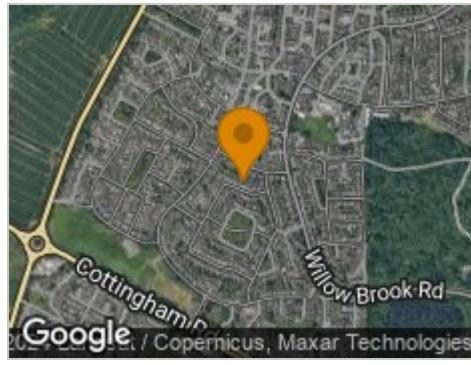
Outside there is an enclosed rear garden and there is an additional garden to the front.



Road Map



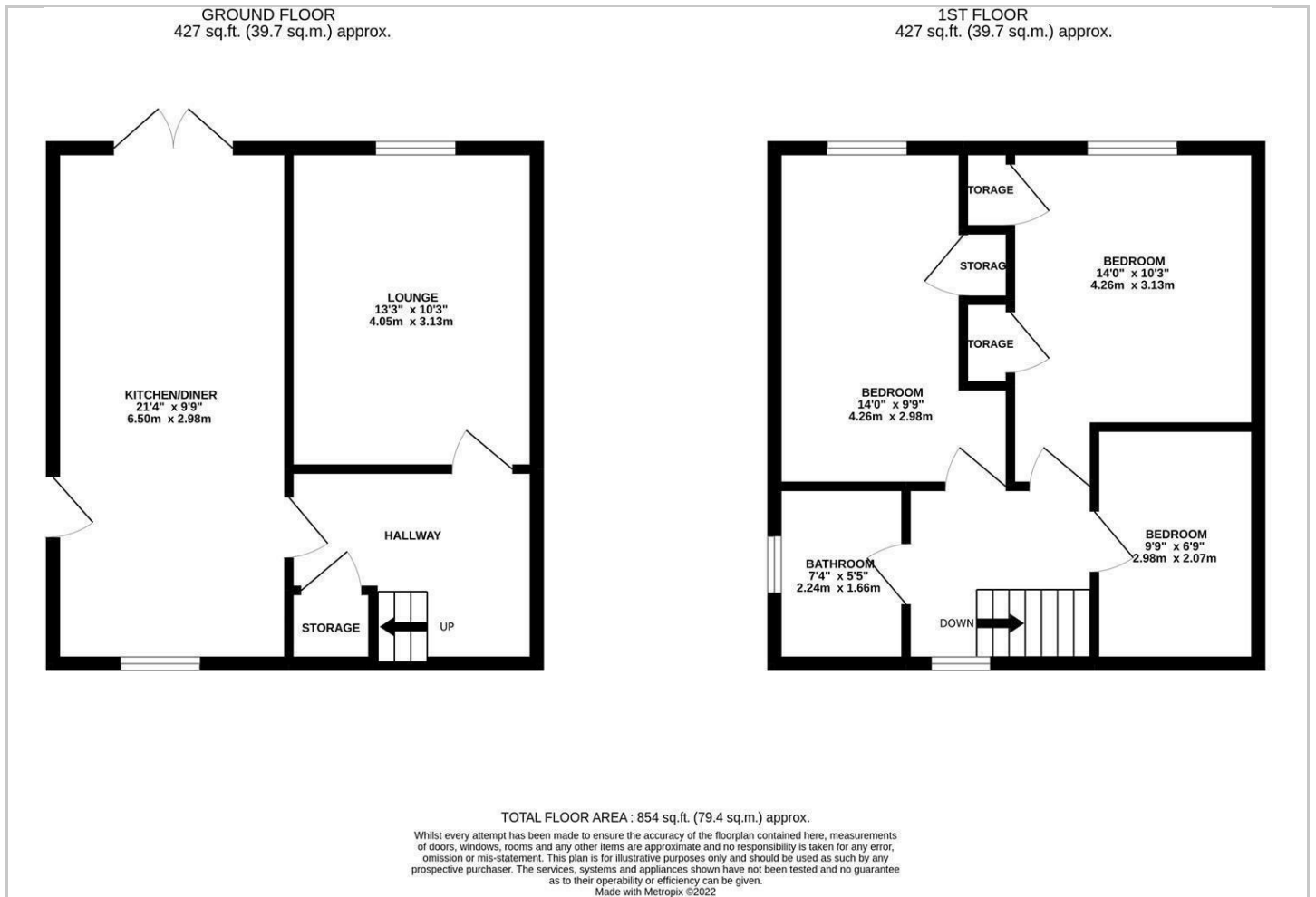
Hybrid Map



Terrain Map



Floor Plan



Viewing

Please contact our Stuart Charles Estate Agents Office on 01536 234264 if you wish to arrange a viewing appointment for this property or require further information.

Energy Efficiency Graph



These particulars, whilst believed to be accurate are set out as a general outline only for guidance and do not constitute any part of an offer or contract. Intending purchasers should not rely on them as statements of representation of fact, but must satisfy themselves by inspection or otherwise as to their accuracy. No person in this firm's employment has the authority to make or give any representation or warranty in respect of the property.