



**STUART
CHARLES**
ESTATE AGENTS



Thurso Walk

, Corby, NN17 2HE

£139,950



Thurso Walk

, Corby, NN17 2HE

£139,950



Entrance Hall

Loft access, three storage cupboards, doors to:

Lounge/Diner

17'0 x 12'1 (5.18m x 3.68m)

Two radiators, double glazed window to rear elevation, Tv point, telephone point, door to:

Kitchen

11'0 x 8'1 (3.35m x 2.46m)

Fitted to comprise a range a range of base and eye level units with a single steel sink and drainer, gas hob with extractor, electric oven, integrated fridge and freezer, space for automatic washing machine, boiler, double glazed window to front elevation.

Bedroom One

12'1 x 10'1 (3.68m x 3.07m)

Double glazed window to front elevation, radiator, built in wardrobe.

Bedroom Two

10'1 x 7'1 (3.07m x 2.16m)

Double glazed window to front elevation, radiator, built in wardrobe.

Bathroom

7'0 x 5'3 (2.13m x 1.60m)

Fitted to comprise a three piece suite consisting of a panel bath with electric shower over, low level pedestal, low level wash hand basin, radiator, ceiling light tunnel.

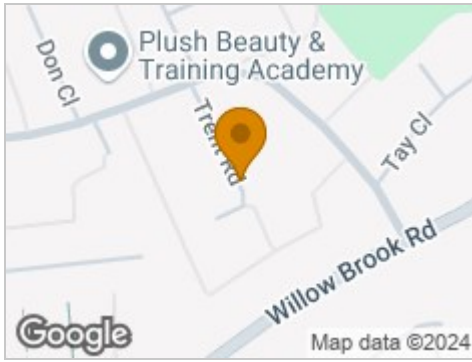
Outside

Front: A large shared lawn leads t access to rear and parking area.

Rear: A laid lawn leads to the shared car park and council rented garages (subject to availability).



Road Map



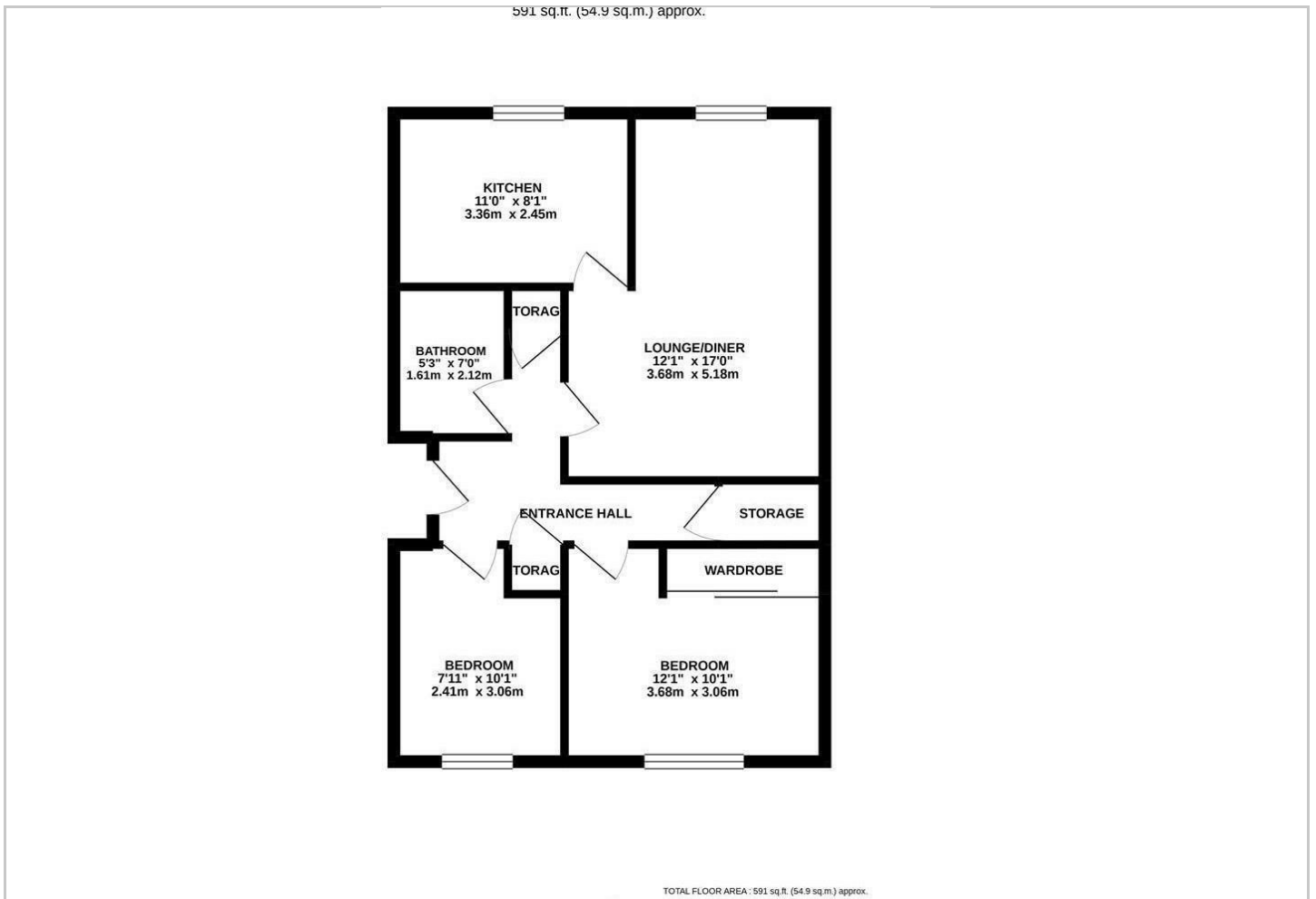
Hybrid Map



Terrain Map



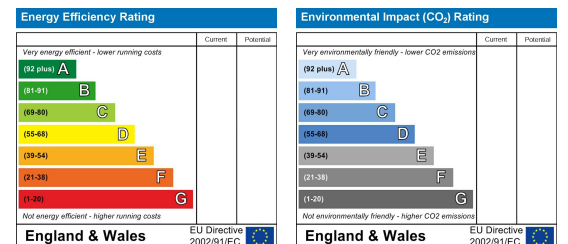
Floor Plan



Viewing

Please contact our Stuart Charles Estate Agents Office on 01536 234264 if you wish to arrange a viewing appointment for this property or require further information.

Energy Efficiency Graph



These particulars, whilst believed to be accurate are set out as a general outline only for guidance and do not constitute any part of an offer or contract. Intending purchasers should not rely on them as statements of representation of fact, but must satisfy themselves by inspection or otherwise as to their accuracy. No person in this firm's employment has the authority to make or give any representation or warranty in respect of the property.