



338 Willow Brook Road, Corby, NN17 2TP



**£175,000**

Stuart Charles are delighted to offer for sale this THREE bedroom family home located in Lodge Park area of Corby. Situated a short walk away from several primary and secondary schools and walking distance to shops an early viewing is recommended to avoid missing out on this home. The accommodation comprises to the ground floor of an entrance hall, kitchen, utility room and a large lounge/diner. To the first floor are three good sized bedrooms, a two piece bathroom and a separate W.C. Outside to the front is a laid lawn, with hedge surround. To the rear a large patio area leads onto a laid lawn and is enclosed by timber fencing and hedge surround. Call now to view!!.

- NO CHAIN
- POTENTIAL TO ADD VALUE
- WALKING DISTANCE TO SHOPS
- THREE GOOD SIZED BEDROOMS
- POPULAR LOCATION
- CLOSE TO PRIMARY AND SECONDARY SCHOOL
- CLOSE TO TOWN CENTRE
- LARGE LOUNGE/DINER

#### **Entrance Hall**

Entered via a double glazed door, stairs rising to first floor landing, door to:

#### **Lounge/Diner**

20'4 x 13'3 (6.20m x 4.04m)

Double glazed window to front and rear elevation, radiator, chimney, tv point, telephone point, door to:

#### **Kitchen**

11'6 x 7'8 (3.51m x 2.34m)

Fitted to comprise a range of base and eye level units with a single sink and drainer, free standing cooker, space for white goods, radiator, double glazed window to rear elevation, double glazed door to rear elevation.

#### **Utility Room**

Single glazed door to the front elevation.







## Landing

Loft access, doors to:

### Bedroom One

13'2 x 10' (4.01m x 3.05m)

Double glazed window to front elevation, radiator, built in wardrobe.

### Bedroom Two

13' x 7'9 (3.96m x 2.36m)

Double glazed window to front elevation, radiator, two built in wardrobes.

### Bedroom Three

9'11 x 6'10 (3.02m x 2.08m)

Double glazed window to rear elevation, radiator.





## WC

4'4 x 2'4 (1.32m x 0.71m)

Featuring a low level wash hand basin and double glazed window to rear elevation.

## Bathroom

5'5 x 4'10 (1.65m x 1.47m)

Fitted to comprise a two piece suite consisting of panel bath with electric shower over, low level pedestal, radiator, double glazed window to rear elevation.

## Outside

To the front is a laid lawn, with hedge surround.

To the rear a large patio area leads onto a laid lawn







and is enclosed by timber fencing and hedge  
surround



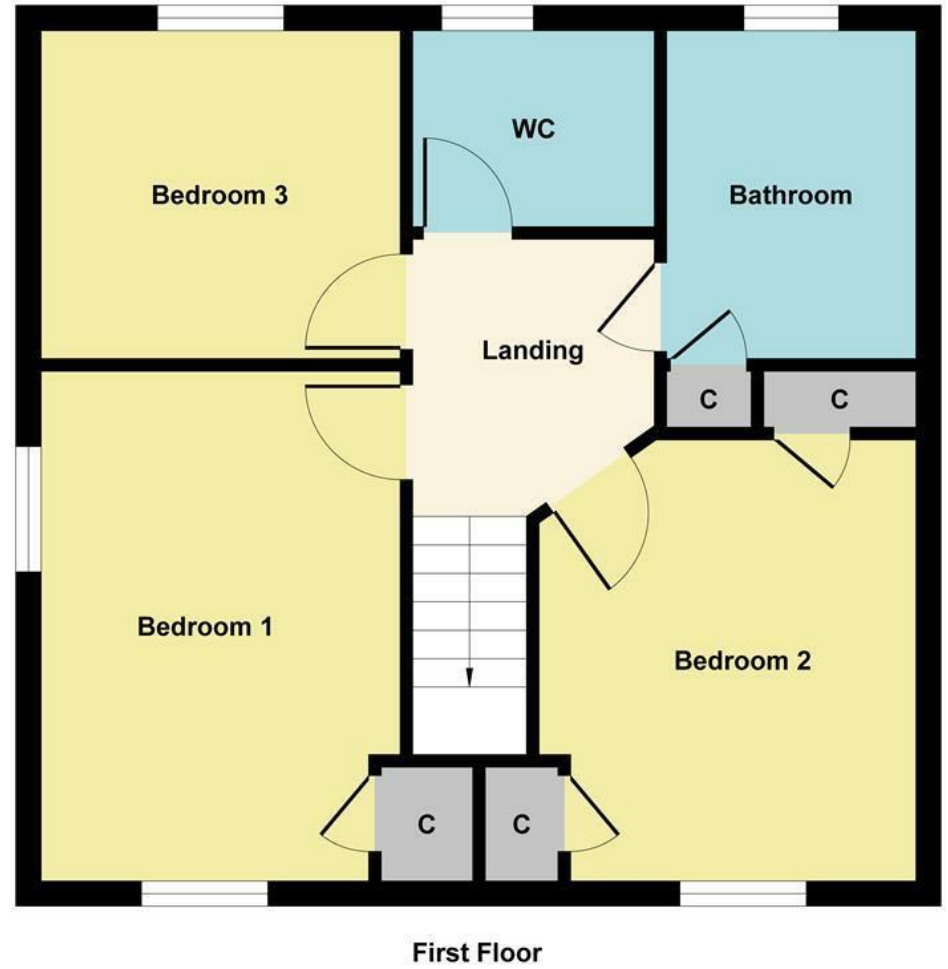
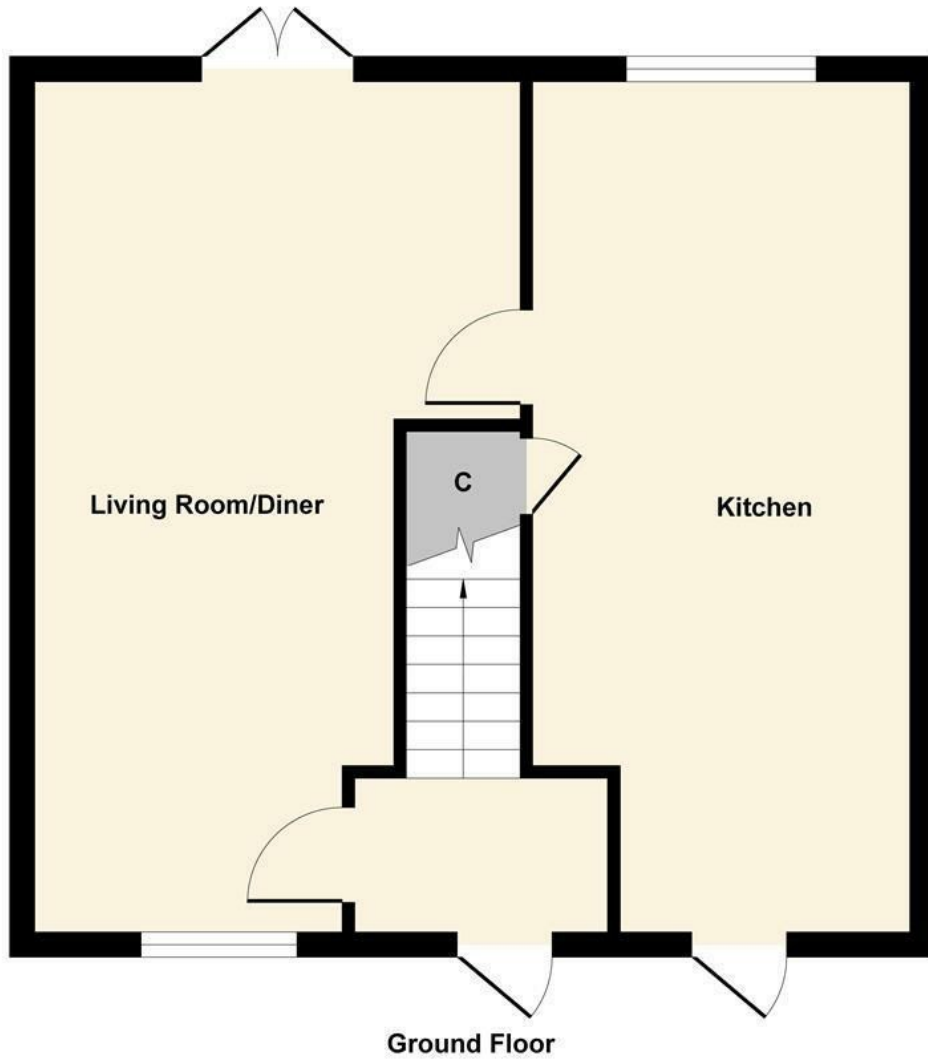


Illustration for identification purposes only, measurements are approximate, not to scale.  
Produced by Elements Property

