



27 Cambridge Avenue, Corby, NN17 2SZ



£225,000

Stuart Charles are delighted to offer for sale with NO CHAIN this Three bedroom semi detached family home located in one of Corby's most sought after area's. Positioned within walking distance of many amenities and close to Thoroughsale woods an early viewing is recommended to avoid missing out on this home. The accommodation on offer comprises to the ground floor of an porch, entrance hall, large lounge, and refitted kitchen/diner. To the first floor are three well proportioned rooms with a bathroom and separate WC. Outside to the front is an artificial lawn with hedge surround, leading to the driveway. To the rear there is a patio area that leads to a laid lawn. At the rear is a seating area with pergola. There is also a brick built outbuilding, all enclosed by timber fence surround. Call now to book a viewing!!

- READY TO MOVE INTO
- MODERN COMBI BOILER
- POTENTIAL TO CONVERT GARAGE
- PRIVATE GARDEN
- DRIVEWAY
- REFITTED KITCHEN
- GOOD TRANSPORT LINKS

Entrance Porch

Entered via a double glazed door, doors to:

Entrance Hall

Entered through a single glazed door, stairs raising to the first floor, radiator.

Lounge

20'1 x 10'1 (6.12m x 3.07m)

Double glazed window to the front elevation, double glazed patio doors to

rear elevation, fire place with feature surround, radiator.

Kitchen/Diner

20'1 x 12'6 (6.12m x 3.81m)

Fitted to comprise a range of base and eye level units with a sink and drainer, induction hob and double electric oven, space for fridge/freezer, space for washing machine, integrated dishwasher, double glazed window and door to rear elevation.







Landing

Loft hatch, airing cupboard, doors to:

Bedroom One

11'6 x 11'6 (3.51m x 3.51m)

Double glazed window to the front elevation, built in wardrobe, radiator.

Bedroom Two

12'9 x 8'11 (3.89m x 2.72m)

Double glazed window to the front elevation, built in wardrobe, radiator.

Bedroom Three

10'3 x 8'3 (3.12m x 2.51m)

Double glazed window to the rear elevation, radiator.





WC

Low level pedestal, double glazed window to rear elevation.

Bathroom

6'11 x 4'7 (2.11m x 1.40m)

Featuring a two piece suite with panel bath and separate shower cubicle, low level wash hand basin, radiator, double glazed window to rear elevation.

Outside

To the front is an artificial lawn with hedge surround, leading to the driveway.

To the rear there is a patio area that leads to a laid lawn. At the rear is a seating area with pergola. There





is also a brick built outbuilding, all enclosed by timber fence surround.



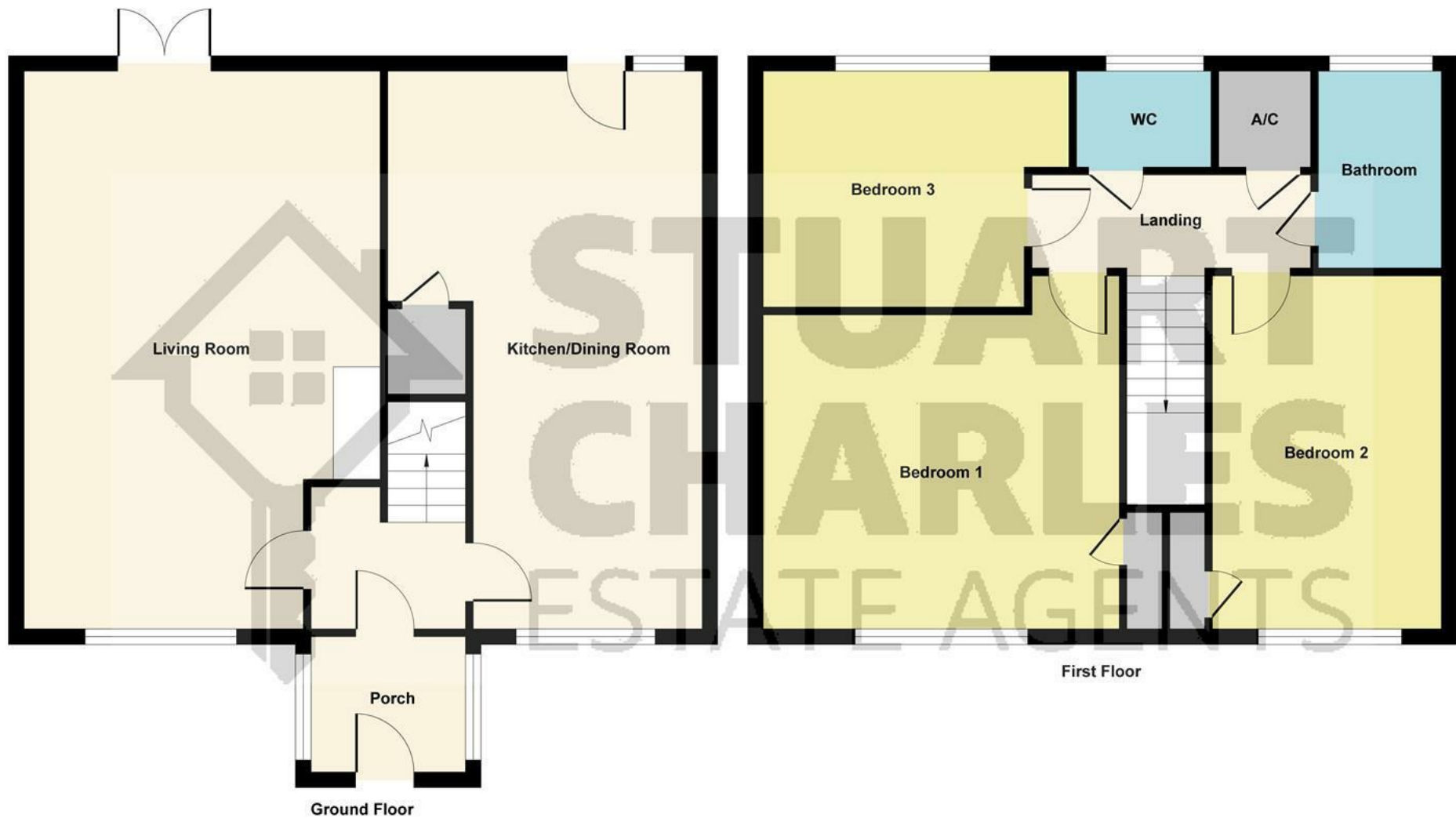


Illustration for identification purposes only, measurements are approximate, not to scale.
Produced by Elements Property

