



13 Uist Walk, Corby, NN17 2LZ



£165,000

Stuart Charles are delighted to offer for sale with NO CHAIN this three bedroom family home located in the Lodge Park area of Corby. Situated a short walk away from several schools and shops this home would make an ideal purchase for a first time buyer or investor. The accommodation comprises to the ground floor of an entrance hall, guest w.c, lounge, kitchen diner and a utility room. To the first floor are three good sized bedrooms and a three piece family bathroom. Outside to the front is a laid lawn which is opposite a shared car park. To the rear a patio area leads onto an artificial lawn and is enclosed by timber fencing to all sides. Call now to view!!.

- NO CHAIN
- LARGE KITCHEN/DINER
- GUEST W.C
- THREE PIECE BATHROOM
- WALKING DISTANCE TO PRIMARY AND SECONDARY SCHOOLS
- LARGE LOUNGE
- UTILITY ROOM
- THREE GOOD SIZED BEDROOMS
- LARGE REAR GARDEN
- CLOSE TO SHOPS AND MAIN BUS LINKS

Entrance Hall

Entered via a double glazed door, radiator, stairs rising to first floor landing, doors to:

Guest W.C

Fitted to comprise a two piece suite consisting of a low level pedestal, low level wash hand basin, double glazed window to front elevation.

Lounge

17'5 x 10'8 (5.31m x 3.25m)

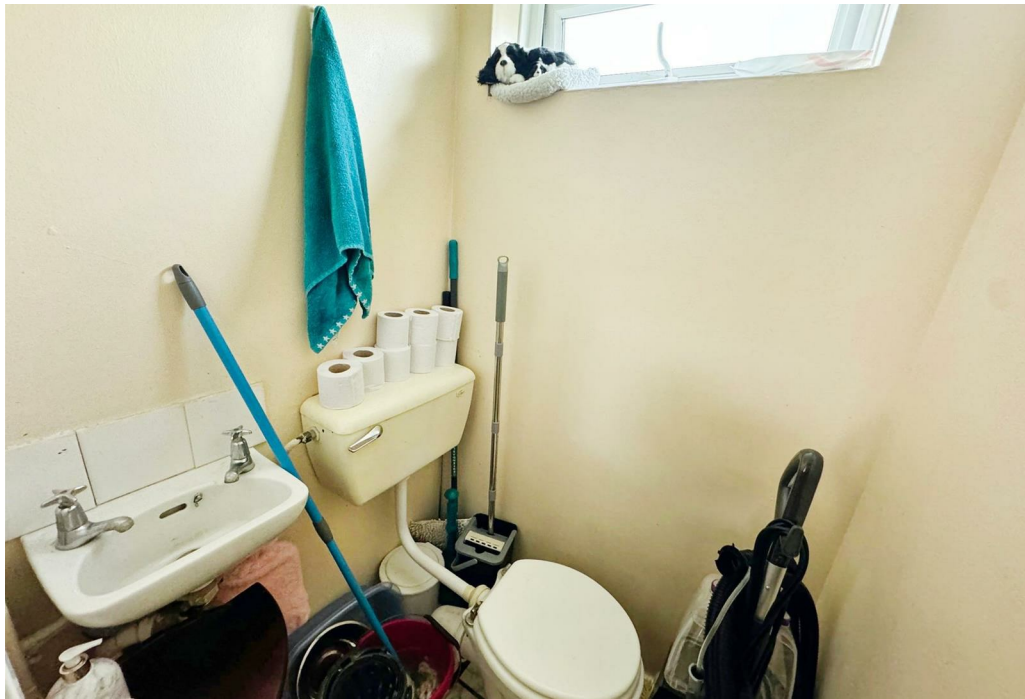
Double glazed window to front and rear elevation, tv point, telephone point, radiator.

Kitchen/Diner

17'6 x 9'4 (5.33m x 2.84m)

Fitted to comprise a range of base and eye level units with a one and a half bowl sink and drainer, space for free standing gas cooker, space for







automatic washing machine, double glazed window to front and rear elevation, radiator, double glazed door to rear elevation, door to:

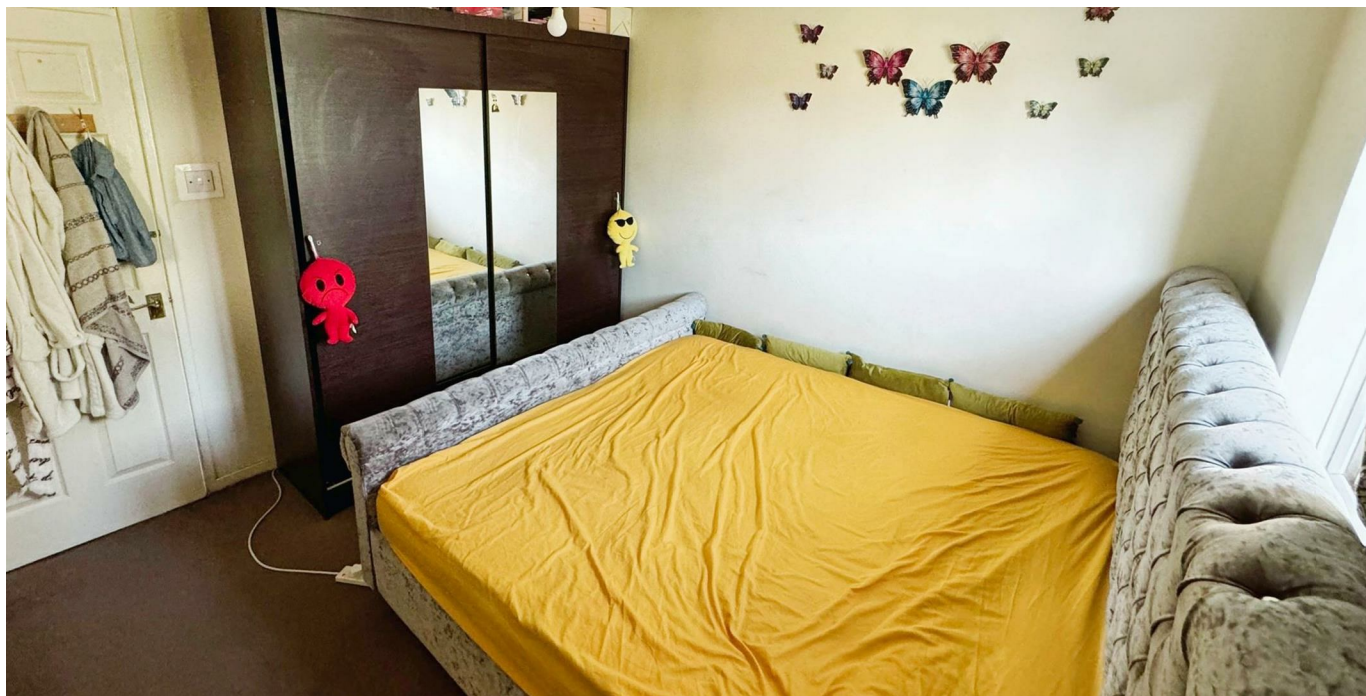
Utility Room

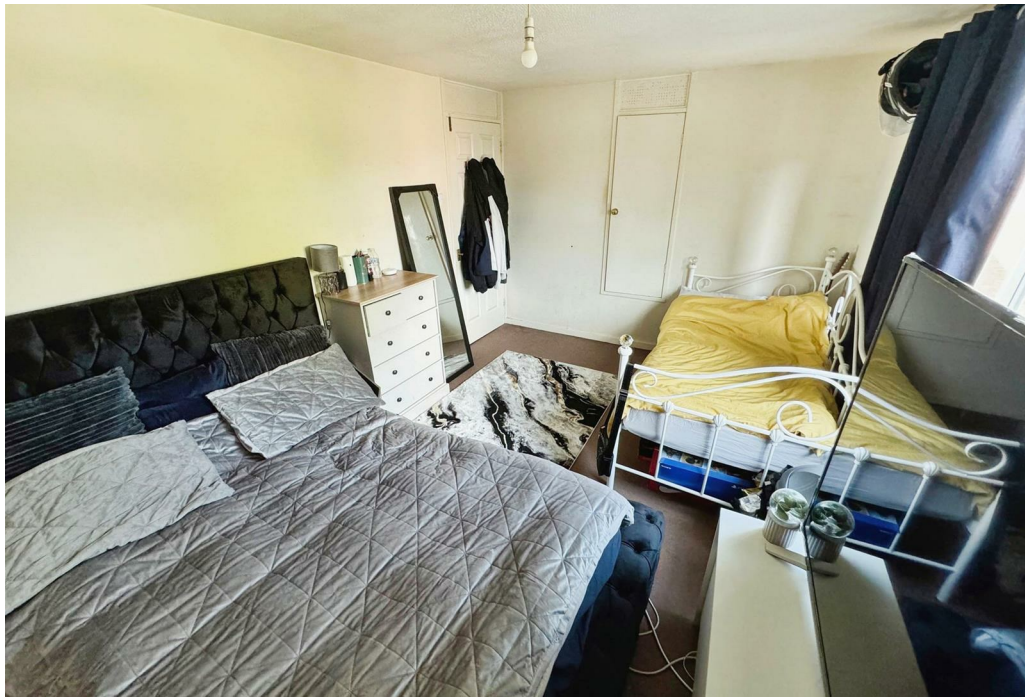
5'6 x 6'4 (1.68m x 1.93m)

Space for free standing fridge/freezer, space for condensing dryer.

First Floor Landing

Loft access, airing cupboard with combi boiler, storage cupboard, doors to:





Bedroom One

13'6 x 13'0 (4.11m x 3.96m)

Double glazed window to front elevation, radiator, built in wardrobe.

Bedroom Two

10'11 x 9'5 (3.33m x 2.87m)

Double glazed window to front elevation, radiator, built in wardrobe.

Bedroom Three

10'6 x 7'5 (3.20m x 2.26m)

Double glazed window to rear elevation, radiator.

Bathroom

6'6 x 6'1 (1.98m x 1.85m)





Fitted to comprise a two piece suite with a panel bath with electric shower over, low level wash hand basin, low level pedestal, radiator, double glazed window to rear elevation.



First Floor



Ground Floor

Illustration for identification purposes only, measurements are approximate, not to scale.
Produced by Elements Property

