



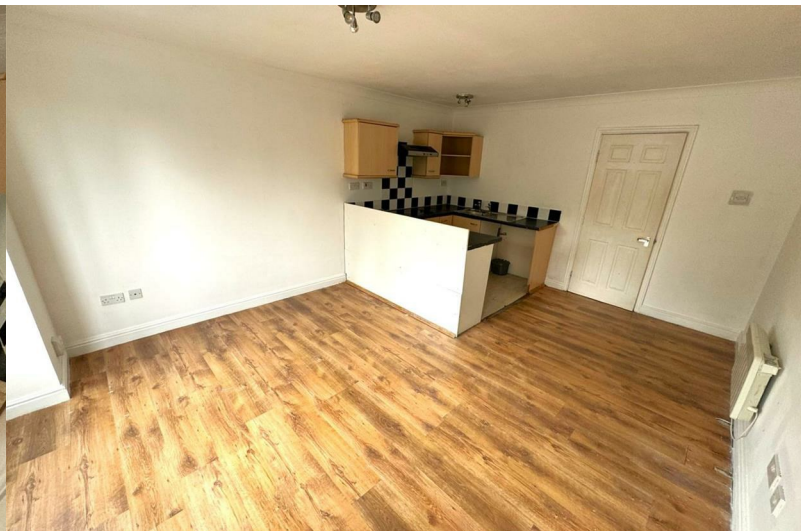
**STUART
CHARLES**
ESTATE AGENTS



Rockingham Mews, Stephenson Way

, Corby, NN17 1BB

£800 Per month



Rockingham Mews, Stephenson Way

, Corby, NN17 1BB

£800 Per month



Entrance Hall

Entered via double glazed doors, stairs rising to landing.

First Floor Landing

Storage cupboard, doors to:

Kitchen/Lounge

15'10 x 12'09 (4.83m x 3.89m)

Fitted to comprise a range of base and eye level units with a single sink and drainer, electric oven and hob, space for automatic washing machine, space for free standing fridge/freezer, opening to lounge area

Lounge Area: Double glazed window to front elevation, electric radiator, tv point, telephone point.

Bedroom Two

11'03 x 9'06 (3.43m x 2.90m)

Double glazed window to rear elevation, storage cupboard, electric radiator.

Second Floor Landing

Doors to:

Bedroom One

12'09 x 12'09 (3.89m x 3.89m)

Double glazed window to front elevation, electric radiator.

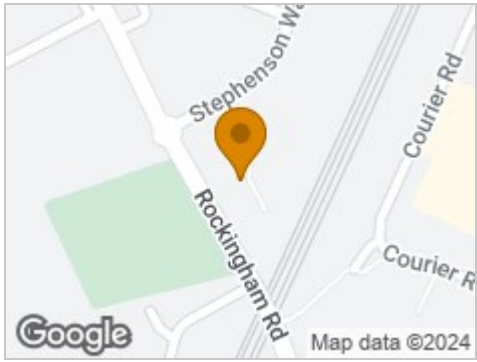
Bathroom

12'08 x 7'10 (3.86m x 2.39m)

Fitted to comprise a three piece suite consisting of a panel bath with mains feed shower over, low level pedestal, low level wash h and basin, Velux window.



Road Map



Hybrid Map



Terrain Map



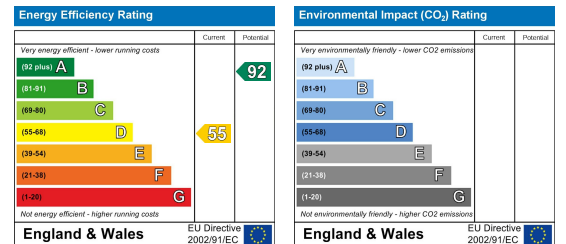
Floor Plan



Viewing

Please contact our Stuart Charles Estate Agents Office on 01536 234264 if you wish to arrange a viewing appointment for this property or require further information.

Energy Efficiency Graph



These particulars, whilst believed to be accurate are set out as a general outline only for guidance and do not constitute any part of an offer or contract. Intending purchasers should not rely on them as statements of representation of fact, but must satisfy themselves by inspection or otherwise as to their accuracy. No person in this firm's employment has the authority to make or give any representation or warranty in respect of the property.