



68 Kensington Walk, Corby, Northamptonshire, NN18 9JB

£185,000

Stuart Charles are delighted to offer for sale this three bedroom home located in the Kingwoods area of Corby. Having being renovated by the current owners this house is ready to move into and walking distance to local amenities, transport links and schools make this a great home for someone. The ground floor comprises of an entrance hall with, lounge, and kitchen/diner with utility room. To the first floor are three good size bedrooms, and Shower room. To the front is a laid lawn with block paved path which has a picket fence surround. To the rear you will find a large patio area that leads onto a laid lawn with timber fence surround. There is also a garden shed. Call now to book a viewing!!

- NO CHAIN
- CLOSE TO BUS LINKS
- WALKING TO TO PRIMARY AND SECONDARY SCHOOLS
- WALKING DISTANCE TO PARADE OF SHOPS
- READY TO MOVE INTO
- DOWNSTAIRS GUEST WC
- CLOSE TO TOWN CENTRE

Entrance Hall

Entered via double glazed door to the front elevation, stairs rising to first floor landing, radiator, doors to:

Lounge

15'11 x 12'06 (4.85m x 3.81m)
Double glazed window to the front and rear elevation, radiators, Tv and Telephone points.

Kitchen/Diner

15'10 x 8'07 (4.83m x 2.62m)
Fitted to comprise a range of base and eye level units with sink and drainer, integrated oven with gas hob, radiator, double glazed window to the rear elevation, double glazed French doors to rear, doors to:

Utility

9'08 x 6'05 (2.95m x 1.96m)
Fitted to comprise a range of base and







eye level units, space for fridge/freezer, space for low level washing machine, space for low level tumble dryer, double glazed door to front elevation.

Guest WC

This two piece suite features a a low level wash hand basin, pedestal and double glazed window to the side elevation.

Landing

Airing cupboard, storage cupboard, loft access, doors to:





Bedroom One

15'9 x 11'7 (4.80m x 3.53m)

Double glazed window to the front and rear elevation, built in wardrobes, radiator.

Bedroom Two

11'00 x 9'07 (3.35m x 2.92m)

Double glazed window to the front elevation, built in wardrobe.

Bedroom Three

10'09 x 6'05 (3.28m x 1.96m)

Double glazed window to the front elevation, built in wardrobe.





Shower Room

9'06 x 4'07 (2.90m x 1.40m)

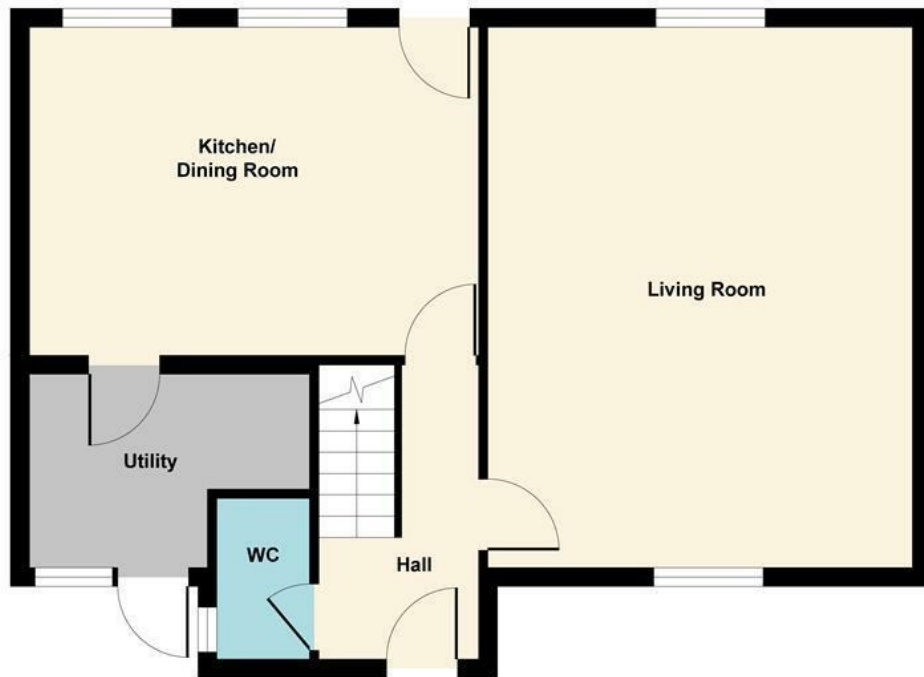
Featuring a three piece suite with a shower cubicle, low level wash hand basin and pedestal, radiator, double glazed window to rear elevation.

Outside

To the front is a laid lawn with block paved path which has a picket fence surround.

To the rear you will find a large patio area that leads onto a laid lawn with timber fence surround. There is also a garden shed.





Ground Floor



First Floor

Illustration for identification purposes only, measurements are approximate, not to scale.

Produced by Elements Property

