



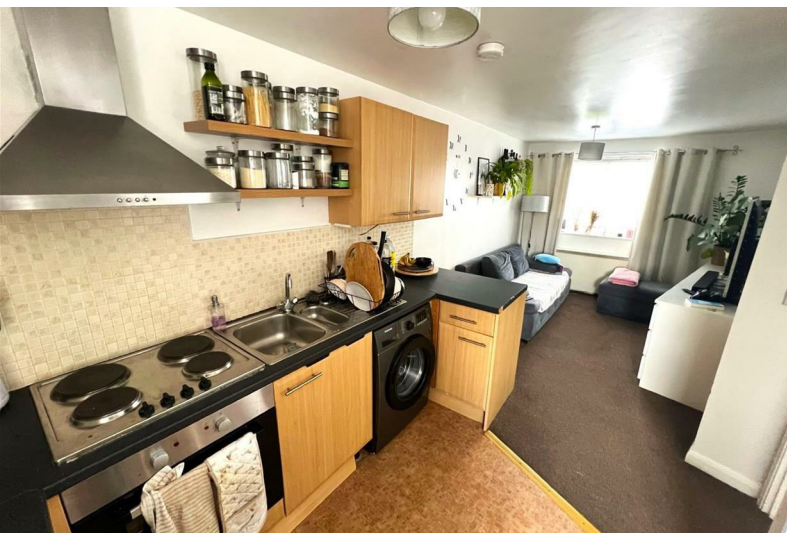
**STUART
CHARLES**
ESTATE AGENTS



Exmouth Court

, Corby, NN18 8EB

By auction £100,000



Exmouth Court

, Corby, NN18 8EB

By auction £100,000



Entrance Hall

Entered via double glazed door, door to:

Inner Hall

Storage cupboard, doors to:

Lounge

10'4 x 7'43 (3.15m x 2.13m)

Double glazed window to front elevation, electric radiator, tv point, telephone point.

Kitchen/Diner

11'47 x 7'87 (3.35m x 2.13m)

Fitted to comprise base and eye level units with a one and a half bowl steel sink and drainer, electric hob with extractor, electric oven, space for free standing fridge/freezer, space for automatic washing machine, space for dishwasher, double glazed window to rear elevation.

Bedroom One

10'85 x 9'93 (3.05m x 2.74m)

Double glazed window to front elevation, electric radiator.

Bedroom Two

9'91 x 6'09 (2.74m x 2.06m)

Double glazed window to front elevation, electric radiator.

Bathroom

7'43 x 6'03 (2.13m x 1.91m)

Fitted to comprise a three piece suite consisting of a panel bath with mixer shower tap, low level pedestal, low level wash hand basin, electric radiator, double glazed window to rear elevation.

Outside

Rear: An allocated parking space offers off road parking and leads to a communal entry door.



Road Map



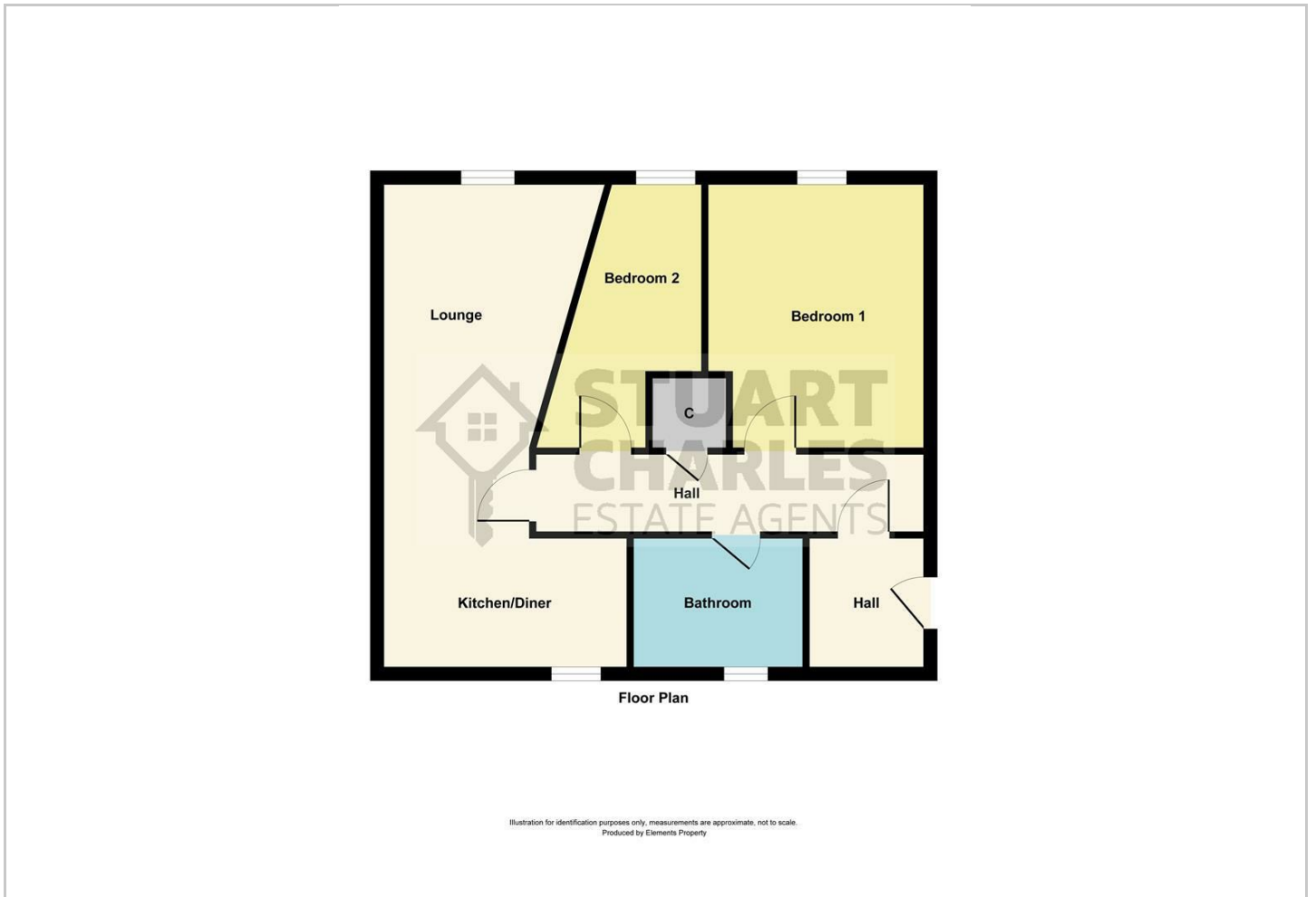
Hybrid Map



Terrain Map



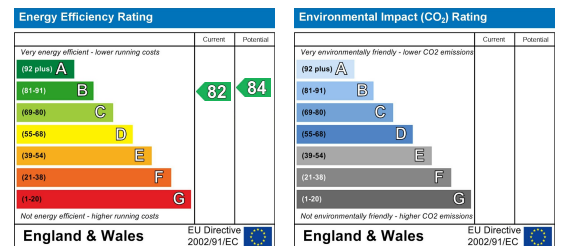
Floor Plan



Viewing

Please contact our Stuart Charles Estate Agents Office on 01536 234264 if you wish to arrange a viewing appointment for this property or require further information.

Energy Efficiency Graph



These particulars, whilst believed to be accurate are set out as a general outline only for guidance and do not constitute any part of an offer or contract. Intending purchasers should not rely on them as statements of representation of fact, but must satisfy themselves by inspection or otherwise as to their accuracy. No person in this firm's employment has the authority to make or give any representation or warranty in respect of the property.