



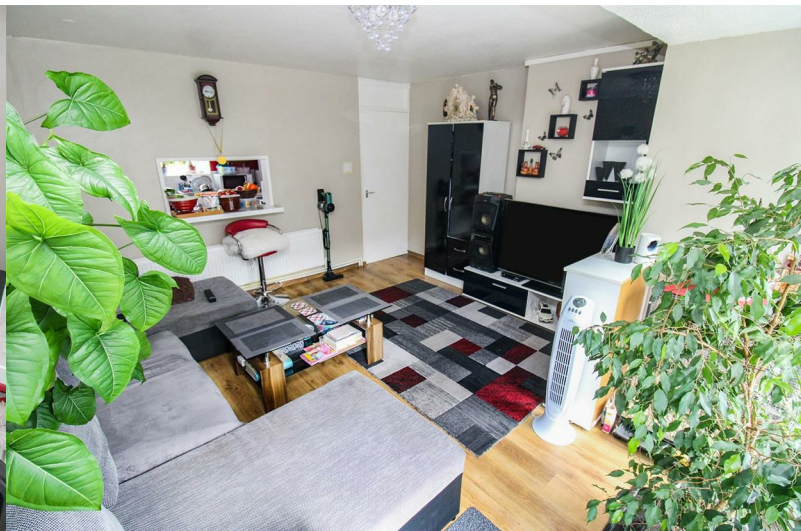
**STUART  
CHARLES**  
ESTATE AGENTS



## Wedmore Court

, Corby, NN18 0DZ

£115,000



# Wedmore Court

, Corby, NN18 0DZ

£115,000



## Entrance Hall

Entered via a double glazed door, radiator, storage cupboard, airing cupboard with combi boiler, doors to:

## Lounge/Diner

13'53 x 10'16 (3.96m x 3.05m)

Radiator, tv point, telephone point, double glazed window and doors to rear elevation.

## Kitchen

10'49x 5'96 (3.05mx 1.52m)

Fitted to comprise a range of base and eye level units with single sink and drainer, space for free standing gas/electric cooker, space for automatic washing machine, space for free standing fridge/freezer, radiator, double glazed window to front elevation.

## Bedroom

11'63 x 10'18 (3.35m x 3.05m)

Double glazed window to front elevation, radiator, built in wardrobe.

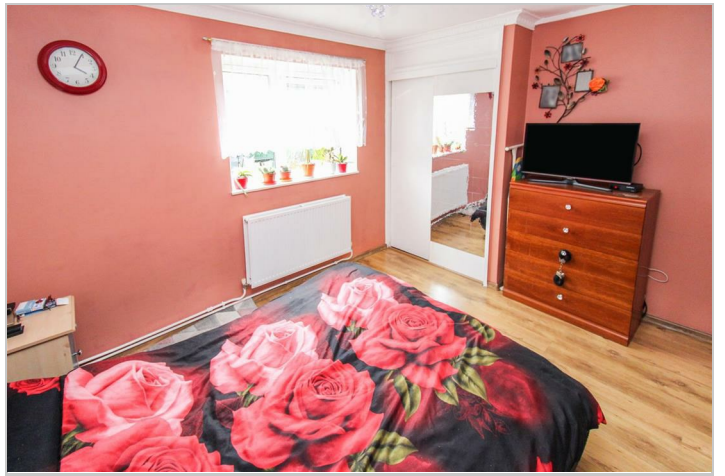
## Shower Room

5'79 x 5'74 (1.52m x 1.52m)

Fitted to comprise a three piece suite consisting of a double shower cubicle, low level pedestal, low level wash hand basin, radiator, double glazed window to front elevation.

## Outside

Rear: A large patio area is enclosed by timber fencing to all sides and has gated access.



### Road Map



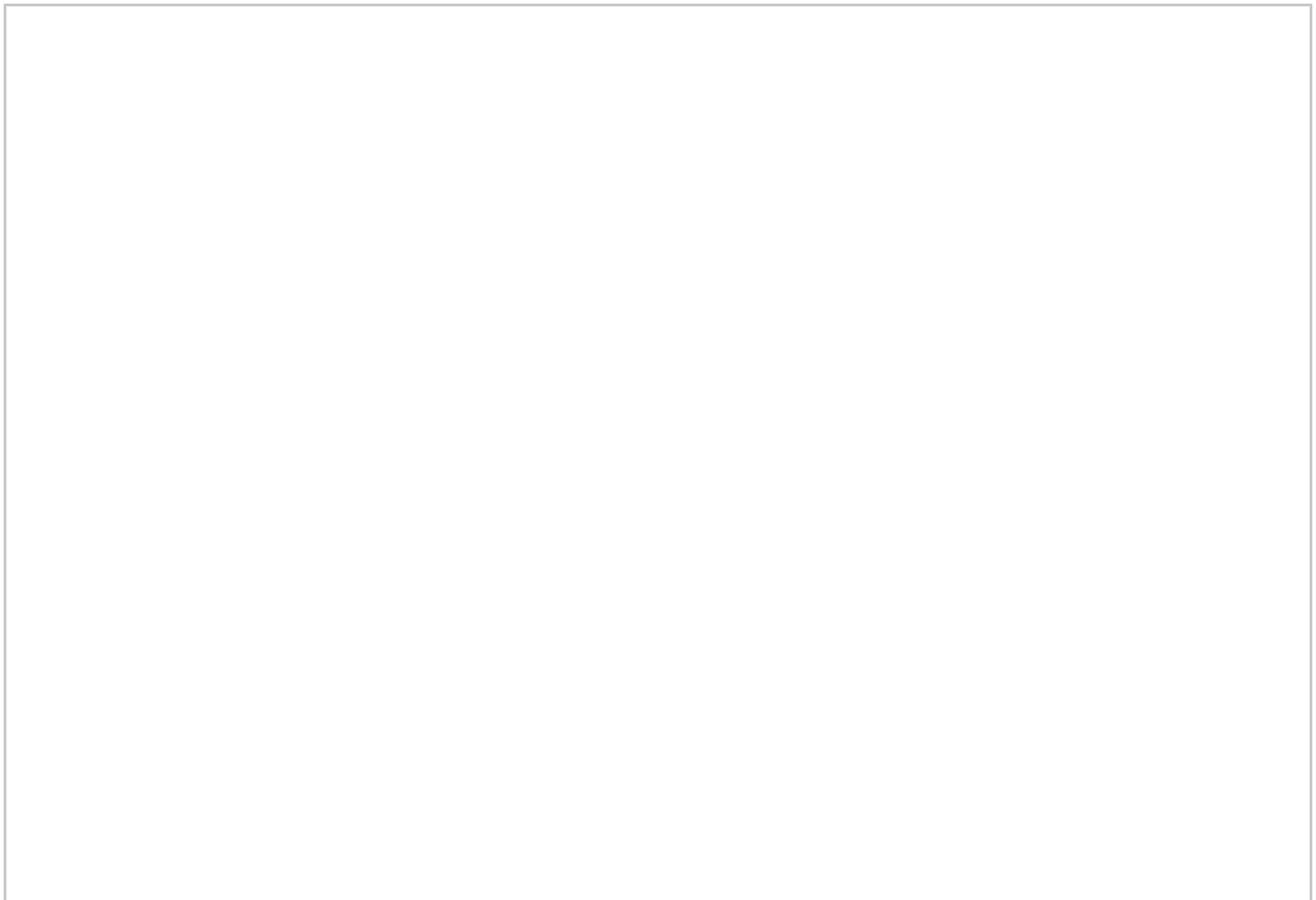
### Hybrid Map



### Terrain Map



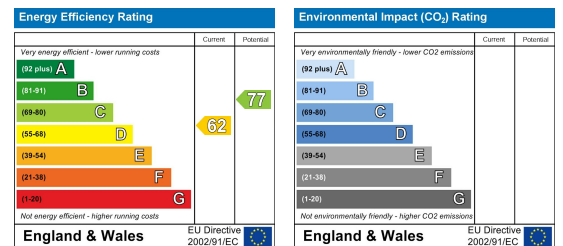
### Floor Plan



### Viewing

Please contact our Stuart Charles Estate Agents Office on 01536 234264 if you wish to arrange a viewing appointment for this property or require further information.

### Energy Efficiency Graph



These particulars, whilst believed to be accurate are set out as a general outline only for guidance and do not constitute any part of an offer or contract. Intending purchasers should not rely on them as statements of representation of fact, but must satisfy themselves by inspection or otherwise as to their accuracy. No person in this firm's employment has the authority to make or give any representation or warranty in respect of the property.