



9 Cresswell Walk, Corby, NN17 2LL



**£180,000**

Stuart Charles are delighted to offer for sale with NO CHAIN this three bedroom family home located in the Shire area of Corby. Although in need of some modernisation this home offers great value for a first time buyer being within walking distance of several amenities. The accommodation comprises to the ground floor of a large entrance hall, lounge/diner and kitchen/breakfast room. To the first floor are three good sized bedrooms and a three piece family bathroom. Outside to the front is a low maintenance laid lawn which is enclosed by timber fencing. To the rear a large L shaped patio area leads onto a laid lawn and is enclosed by timber fencing with gated access to a communal carpark at the rear. Call now to view!!.

- NO CHAIN
- LARGE KITCHEN/BREAKFAST ROOM
- THREE PIECE FAMILY BATHROOM
- CLOSE TO LARGE COMMUNAL CAR PARK
- CLOSE TO SHOPS
- LARGE LOUNGE/DINER
- THREE GOOD SIZED BEDROOMS
- WEST FACING GARDEN
- WALKING DISTANCE TO SCHOOLS
- IN NEED OF SOME MODERNISATION

### Entrance Hall

9'5 x 8'0 (2.87m x 2.44m)

Entered via a double glazed door, radiator, storage cupboards. stairs rising to first floor landing, doors to

### Lounge/Diner

21'5 x 11'3 (6.53m x 3.43m)

Double glazed window to front elevation, double glazed door to rear elevation, radiator, tv point, telephone point.

### Kitchen

14'4 x 10'3 (4.37m x 3.12m)

Fitted to comprise a range of base and eye level units with a single steel sink and drainer, free standing cooker with extractor, space for automatic washing machine, space for free standing fridge/freezer, radiator, double glazed window and door to rear elevation, door to dining area.







## First Floor Landing

Loft access, storage cupboard, doors to:

### Bedroom One

11'5 x 11'3 (3.48m x 3.43m)

Double glazed window to front elevation, radiator, built in wardrobe.

### Bedroom Two

11'2 x 10'6 (3.40m x 3.20m)

Double glazed window to rear elevation, radiator, airing cupboard with combi boiler.

### Bedroom Three

11'1 x 7'3 (3.38m x 2.21m)

Double glazed window to front elevation, radiator.





## **Bathroom**

7'11 x 6'0 (2.41m x 1.83m)

Fitted to comprise a three piece suite consisting of a corner bath, low level wash hand basin, low level pedestal, radiator, double glazed window to rear elevation.

## **Outside**

Front: A large laid lawn is enclosed by timber fencing to all sides.

Rear: A large I shaped patio area leads to a laid lawn and is enclosed by timber fencing to all sides, gated access to shared carpark.











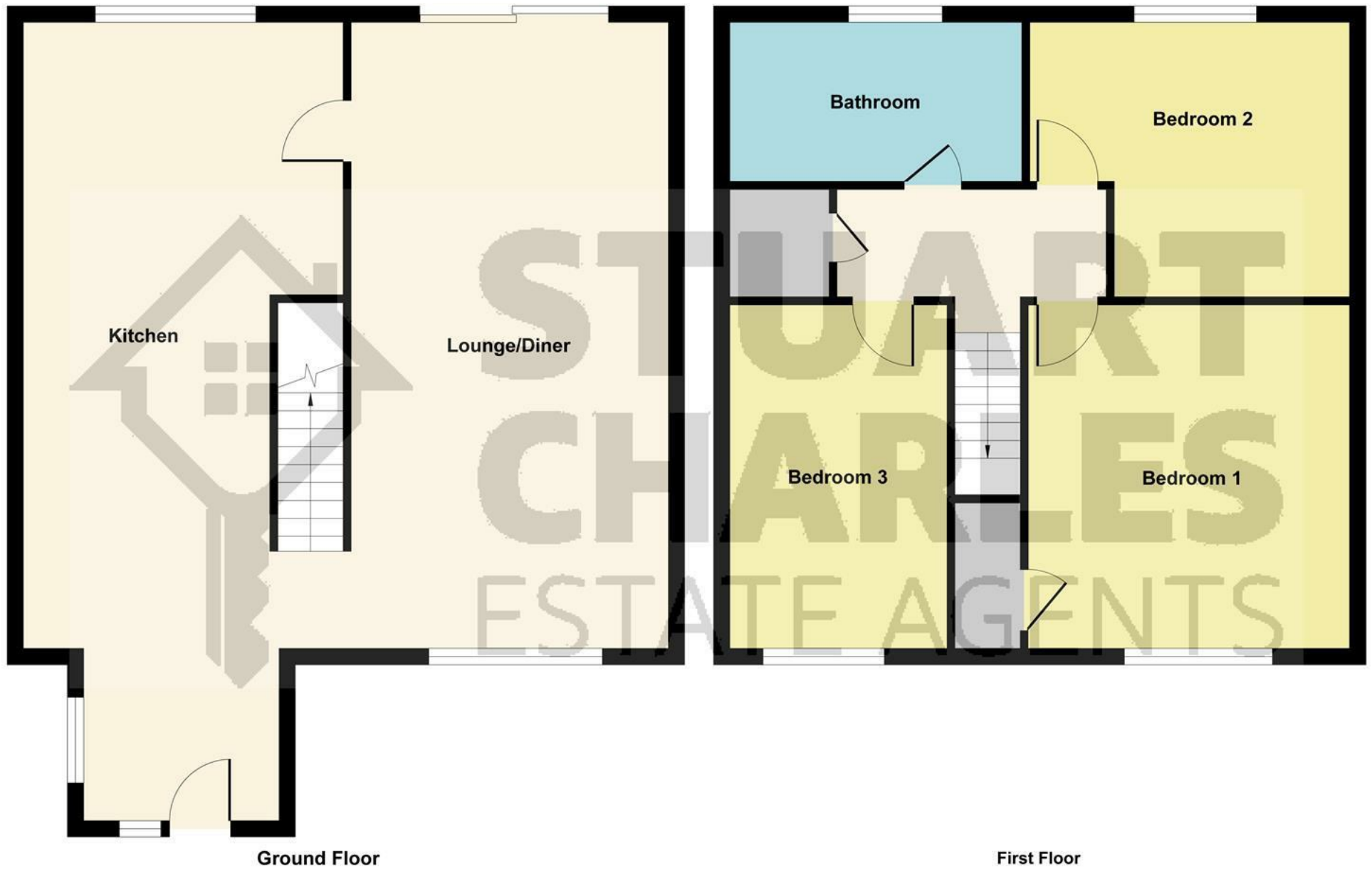


Illustration for identification purposes only, measurements are approximate, not to scale.  
Produced by Elements Property

