



26 High Street, Corby, NN17 1UX



**£172,000**

Stuart Charles are delighted to offer for sale with NO CHAIN this TWO DOUBLE bedroom home located in the Old Village area of Corby. Situated a short walk away from a range of amenities to include the high street, train station and several schools an early viewing is recommended to avoid missing out on this home. The accommodation comprises to the ground floor of a lounge, kitchen, utility room and family bathroom while to the first floor are two double bedrooms, Outside to the rear a decking area leads to a low maintenance gravel and artificial lawn garden which is enclosed by timber fencing to all sides. Call now to view!!.

- NO CHAIN
- MODERN KITCHEN AND UTILITY ROOM
- TWO DOUBLE BEDROOMS
- CLOSE TO TRAIN STATION
- LOUNGE/DINER
- THREE PIECE GROUND FLOOR BATHROOM
- WALKING DISTANCE TO SHOPS
- WALKING DISTANCE TO PRIMARY AND SECONDARY SCHOOLS

### Lounge

12'0 x 12'0 (3.66m x 3.66m)

Double glazed window to front elevation, radiator, tv point, telephone point, door to:

### Kitchen

12'0 x 8'0 (3.66m x 2.44m)

Fitted to comprise a range of base and eye level units with a electric hob with extractor, electric oven, space for free standing fridge and freezer, stairs rising

to first floor landing, double glazed door to rear elevation, archway to:

### Utility

Fitted with a single steel sink and drainer, space for automatic washing machine, radiator, double glazed window to side elevation.

### Bathroom

This fully tiled room is fitted to comprise a three piece suite consisting







of a panel bath with mixer shower tap, low level pedestal, low level wash hand basin, radiator, combi boiler and double glazed windows to the side and rear elevations.

### **First Floor Landing**

Loft access, doors to:

#### **Bedroom One**

12'0 x 12'0 (3.66m x 3.66m)

Double glazed window to front elevation, radiator.

#### **Bedroom Two**

9'2 x 8'0 (2.79m x 2.44m)

Double glazed window to rear elevation, radiator.

### **Outside**





Rear: A decking area leads onto a low maintenance gravel area and artificial lawn area which is all enclosed by timber fencing too all sides, gated access is provided to the rear.



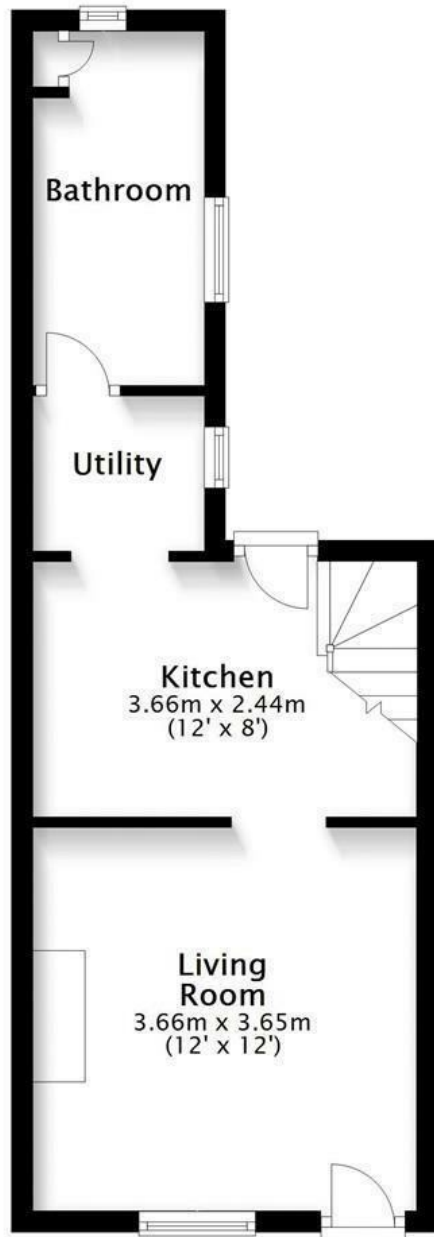






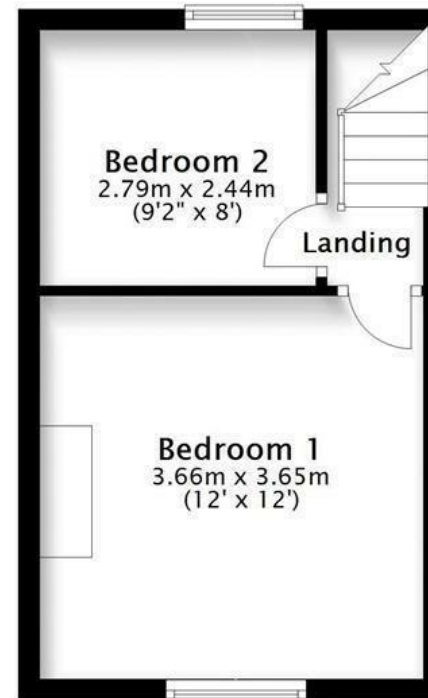
## Ground Floor

Approx. 30.9 sq. metres (332.5 sq. feet)



## First Floor

Approx. 22.6 sq. metres (243.6 sq. feet)



Total area: approx. 53.5 sq. metres (576.0 sq. feet)

