



17 Woodnewton Way, Corby, NN17 2NS



£210,000

Stuart Charles are delighted to offer for Sale this three bedroom home, located in the desirable area of Lodge park area of Corby. With stunning views of Thorough Sale woods and walking distance to a host of amenities, an early viewing is recommended to avoid missing out on this home. The accommodation comprises to the ground floor an entrance hall with storage, living room, kitchen/diner with views into the garden. To the first floor are three good sized rooms and a four piece bathroom. The front is enclosed by a privet hedge surround, with gated access, while to the rear there is a patio area that leads to a large laid lawn all enclosed by timber fence surround. There is also a brick built storage room with guest W.C. Call now to book a viewing!!

- OVER LOOKING THOROUGHSALE WOODS
- CAN BE CONVERTED BACK INTO A FOUR BED HOME
- READY TO MOVE INTO
- DOWN STAIRS WC
- LARGE KITCHEN DINER
- CUL-DE-SAC LOCATION
- THREE DOUBLE BEDROOMS
- PARKING BAY NEXT TO THE HOUSE

Entrance Hall

Entered via double glazed front door, radiator, under stair cupboard, doors to;

Lounge

12'10" x 12'8" (3.91m" x 3.86m")
Double glazed window to front elevation, radiator, tv and telephone point, with feature surround.

Kitchen/Diner

18'9 x 10'4 (5.72m x 3.15m)
Fitted to comprise a range of base and eye level units with a single steel sink and drainer, integrated electric cooker with gas hob, space for free standing fridge/freezer, space for automatic washing machine, pantry cupboard, radiator, double glazed window to rear elevation, double glazed door to rear elevation.







Landing

Loft access, doors to:

Bedroom One

13'1" x 12'6" (3.99m" x 3.81m")

Two double glazed window to front elevation, radiator, built in wardrobe.

Bedroom Two

13'1" max x 11'4" (3.99m" max x 3.45m")

Double glazed window to rear elevation, radiator, built in wardrobe, airing cupboard.





Bedroom Three

10'3" x 6'9" (3.12m x 2.06m")

Double glazed window to front elevation, radiator, built in wardrobe.

Bathroom

Fitted to comprise a four piece suite consisting of a panel bath, with separate shower cubicle, low level wash hand basin, low level pedestal, radiator, two double glazed window to rear elevation.

Outside

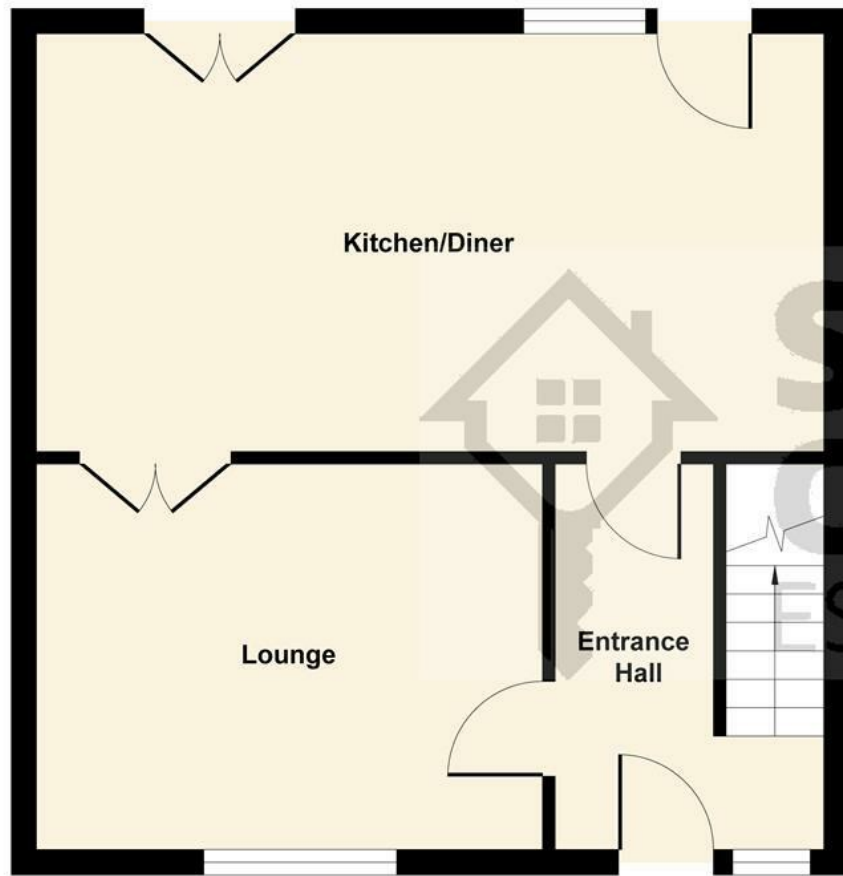
The front is enclosed by a privet hedge surround, with gated access.

To the rear there is a patio area that leads to a large





laid lawn all enclosed by timber fence surround.
There is also a brick built storage room with guest
W.C.



Ground Floor



First Floor

Illustration for identification purposes only, measurements are approximate, not to scale.
Produced by Elements Property

