



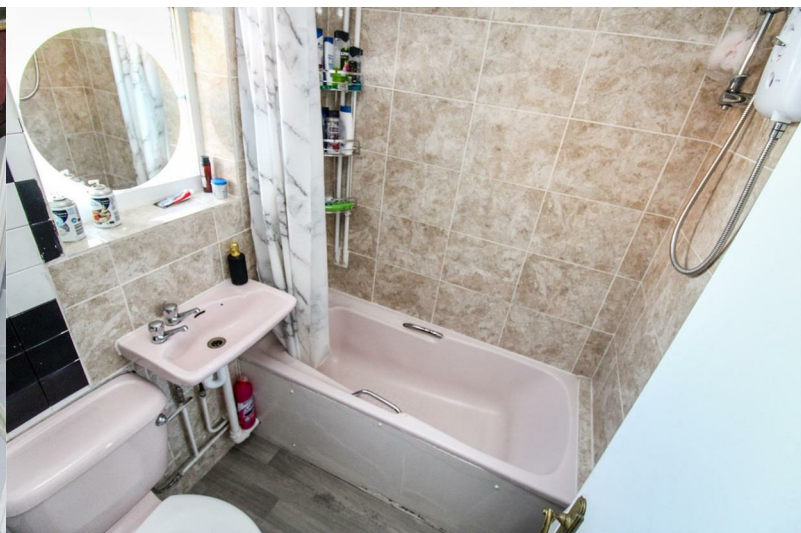
**STUART
CHARLES**
ESTATE AGENTS



Stephenson Way

, Corby, NN17 1DA

£179,950



Stephenson Way

, Corby, NN17 1DA

£179,950



Entrance Hall

Entered via a double glazed door, electric radiator, stairs rising to first floor landing, doors to:

Lounge

14'5 11'0 (4.39m x 3.35m)

Double glazed window to front elevation, electric radiator, tv point.

Bathroom

5'5 x 5'0 (1.65m x 1.52m)

Featuring a three piece suite with a panel bath and electric shower over, low level wash hand basin, low level pedestal, double glazed window to side elevation.

Kitchen

8'9 x 8'6 (2.67m x 2.59m)

Fitted to comprise a range of base and eye level units with a single sink and drainer, electric oven and hob, space for free standing fridge/freezer, space for automatic washing machine, pantry cupboard, under stairs storage, electric radiator, double glazed window to rear, double glazed door to rear.

First Floor Landing

Loft access, doors to:

Bedroom One

14'6 x 11'0 (4.42m x 3.35m)

Double glazed window to front elevation, electric radiator, built in wardrobe.

Bedroom Two

8'8 x 7'6 (2.64m x 2.29m)

Double glazed window to side elevation, electric radiator, built in wardrobe.

Bedroom Three

6'9 x 6'0 (2.06m x 1.83m)

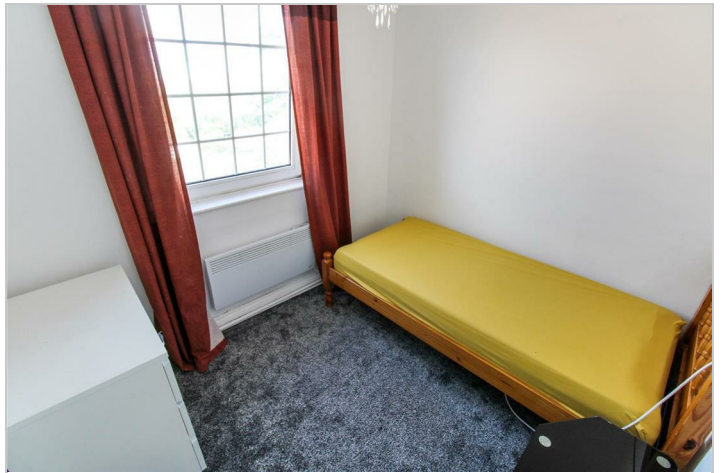
Double glazed window to rear, electric radiator.

Outside

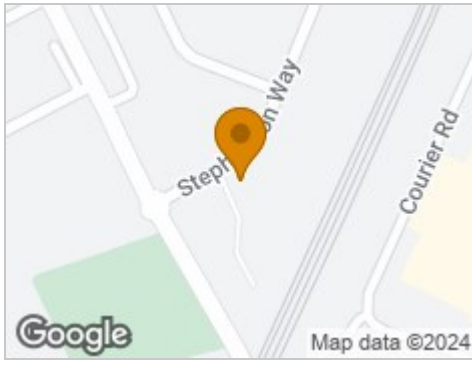
Front: Laid to lawn and enclosed by privet hedge.

Rear: A large driveway provides off road parking for multiple vehicles and leads to a large laid lawn. Shared pedestrian access to number 6.

COUNCIL TAX BAND A



Road Map



Hybrid Map



Terrain Map



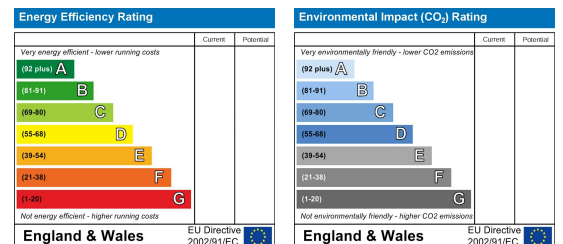
Floor Plan



Viewing

Please contact our Stuart Charles Estate Agents Office on 01536 234264 if you wish to arrange a viewing appointment for this property or require further information.

Energy Efficiency Graph



These particulars, whilst believed to be accurate are set out as a general outline only for guidance and do not constitute any part of an offer or contract. Intending purchasers should not rely on them as statements of representation of fact, but must satisfy themselves by inspection or otherwise as to their accuracy. No person in this firm's employment has the authority to make or give any representation or warranty in respect of the property.